

Quick start-up guide

Welcome!

Thank you for buying a Yale safe.

Before operating your new Yale safe, please read the user manual and fitting guide to ensure maximum performance.

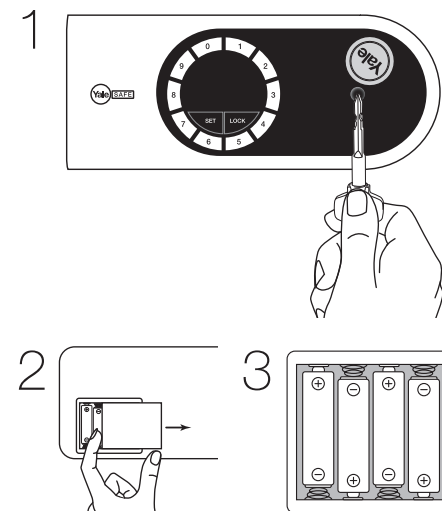
For any inquiries visit www.yaleasia.com



Please do not store the mechanical override keys inside the safe.

An ASSA ABLOY Group brand **ASSA ABLOY**

First time operating a new Safe



- 1 Open the safe using the manual override key.
- 2 Remove the battery cover located on the rear of the door.
- 3 Place the batteries according to the illustration at the back of the battery compartment.
- 4 Close the safe using the manual override Key

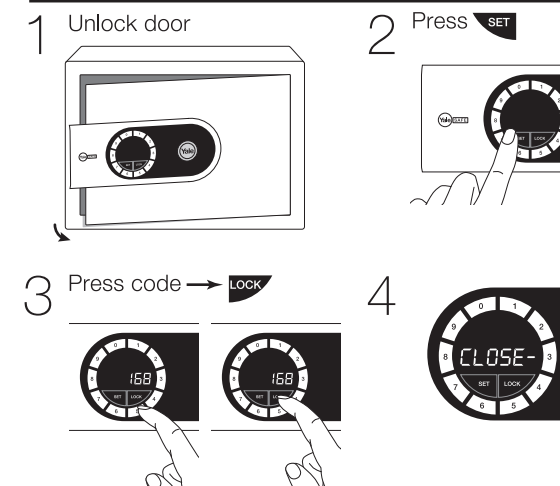


Please note, when the safe is opened by manual override key, it must be closed by the manual override key too. Otherwise the locking mechanism may be damaged.

The world's favorite lock



Set/re-set your user code



- 1 After installed the batteries, enter the default ex-factory code **168** to unlock the safe.
- 2 Press **SET**. Enter the new user code (3-6 digits). Press **LOCK** to complete the user code setting.
- 3 The display **CLOSE-** will confirm that the new code is set and door will be locked at the same time.

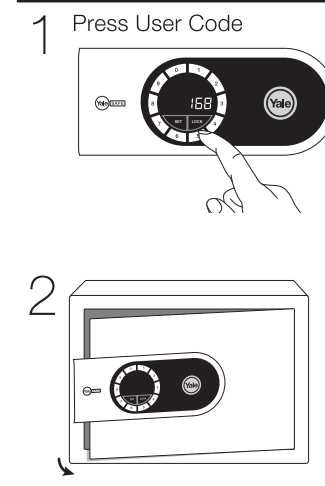


The default ex-factory User Code is 168. After the User Code is reprogrammed, Please remember it well and keep it in a secure place. Once it is re-programmed, the default ex-factory User Code CANNOT be used again to unlock the safe

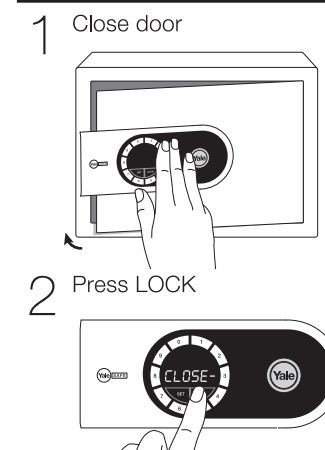


It is important also to re-program the Administration Code for a new Safe. Please refer to the user manual for Administration Code re-programming.

Opening the safe



Closing the safe



Please note that if the safe is unlocked by manual override key, it can only be locked by the manual override key. If the safe is unlocked by electronic key code, it can only be locked by the electronic key. Forcing the safe to lock/unlock by different means may damage the internal locking mechanism causing permanent failure in the lock.