



For peace of mind, you need to secure yourself, your home and your personal belongings. Yale Digital Door Locks take care of all of this so that you can enjoy your life without any worries.

In these products we have combined our long experience in making secure and reliable locks with the latest technology for convenience and safety.

With all the functions for convenience and safety, Yale Digital Door Locks clearly offer you more than just security. In addition to this, we have also put a lot of effort in the aesthetic design of these products, so that your Yale Digital Door lock can actually enhance the appearance of your door while securing it at the same time.

The future of locking is already here and ready for use. Get rid of all your concerns regarding the security of your home and use a Yale Digital Door Lock to unlock the door to the potential of your life.

Unlock your life!

<http://www.yaledigital.com.cn> (CHINA)
<http://www.yalelock.com> (APAC & EMEA)

The world's favorite lock



Getting Started

4p	Safety Cautions
5p	Product Features
6p	Manual Guide

Direction

8p	Components Overview	
9p	Specification	
10p	Identification	
12p	How to Use	Normal Mode Change Mode To Use Master PIN Code Fingerprint Guide Use Fingerprint Safety Mode Change Mode To Use Master PIN Code Fingerprint Guide Use Fingerprint Open Door from Inside Lock Door
20p	Settings	Safe Handle Feature Volume Setting Feature Auto / Manual Feature Alarm Feature Change to Fingerprint Mode Voice / Melody Feature Language Setting Forced Lock
25p	Safety Feature	3-minute Lock Feature Open Door with false PIN code Emergency mechanical key override

Extra Features

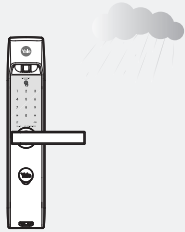
26p	Option	Remote Control Module Remote Control
28p	Customer Service	Emergency Power Supply for Discharged Batteries Customer Service Request for Product Errors
29p	Chinese manual	

Yale® Safety Cautions

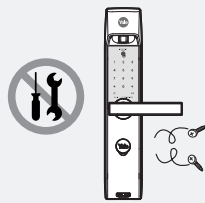
Must Read This

Please read this carefully for your own safety.

Do not install the unit in outdoor environment.



Do not attempt to disassemble the unit by yourself. That can cause an electronic shock and product damage.

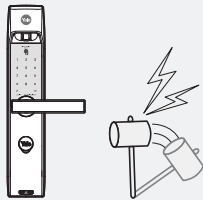


An infant and some users who have unusual fingerprints (those which are difficult to register) may not be registered for fingerprint verification.



※ Scan-type fingerprint modules do not recognize fingerprints with water or foreign materials and set off alarm sounds.

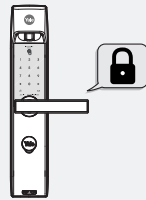
Do not use force with a tool onto the product.



Please keep your PIN Code safely.



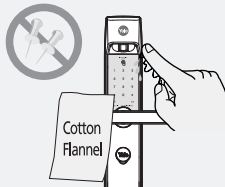
Make sure to lock the door tight when you go out.



Be careful not to hit the handle as it may cause injuries.



Keep foreign materials away from the fingerprint sensor to maintain it cleanly and do not use it with wet fingers.



Do not spray water directly to the product or wipe it with chemical substances such as benzene, thinner, or alcohol when cleaning the product.



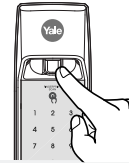
Caution

Make sure to follow the above instructions to avoid any injuries or damages on the properties.

Yale® Product Features

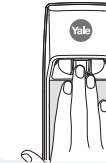
Product Features

Please read



One-touch Fingerprint Verification Method (Easy Scan)

14P



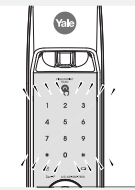
Palm Touch Feature

13P



Voice Guide Feature

24P



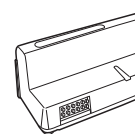
Smart Pad Feature

26P

SAFE

Safety Mode

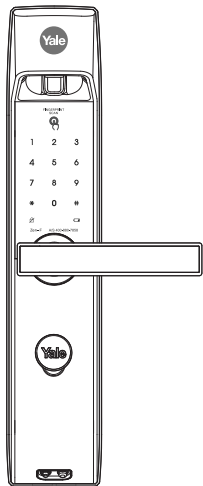
16P



Yale Networking System (Option)

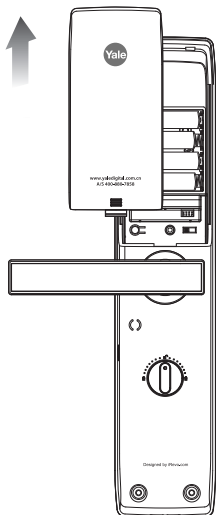
28P

Front Body Icon



- Lift the fingerprint cover open
- Enter fingerprint
- Keypad (10-Key)
- User PIN Code
- Master PIN Code
- Fingerprint PIN Code
- One time User PIN Code
- Fake PIN Code
- Touch
- Button
- Button

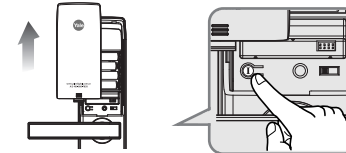
Back Body Icon



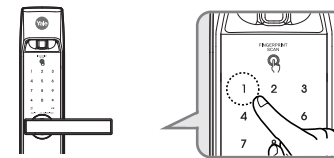
- Registration Button
(Open Battery Cover)
- Auto / Manual Lock button
(Open Battery Cover)
- Volume Control Switch
(Open Battery Cover)
- Manual thumb turn

EX

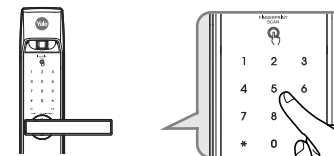
› Registering Master PIN Code (Normal Mode)



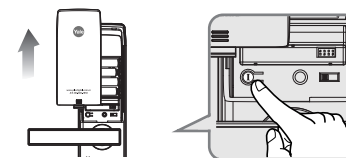
Open the battery cover in the back body and press **I** (Registration) button once.



Enter numbers 1

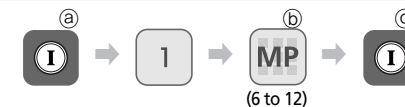


Press the registered Master PIN Code (6 to 12 digits) according to the voice guide.
(The default Master PIN Code is '1 2 3 4 5 6 7 8 9 0')



Press the **I** (Registration) button in the Back Body again to complete the Master PIN Code registration.

STEP



Description

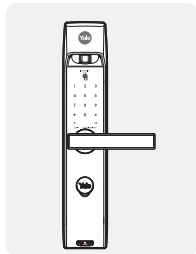
- (a) Open the battery cover in the back body and press **I** (Registration) button once.
- (b) Press the registered Master PIN Code (6 to 12 digits) according to the voice guide.
(The default Master PIN Code is '1 2 3 4 5 6 7 8 9 0')
- (c) Press the **I** (Registration) button in the Back Body again to complete the Master PIN Code registration.

Yale® Components Overview

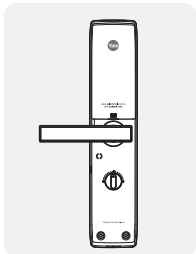
Basic Contents

The contents of this product may be subject to change without notice for performance or quality improvement.

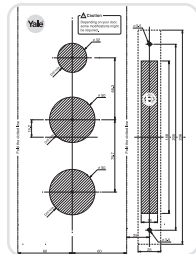
Basic Contents



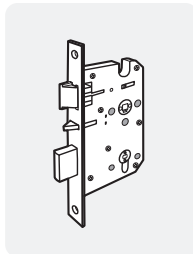
Front (Front Body)



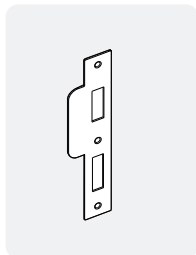
Back (Main Body)



Installation Template



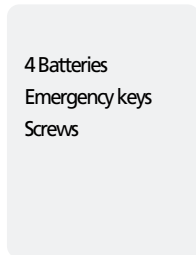
Lock case



Strike Plate



Users Guide



4 Batteries
Emergency keys
Screws

Option

- Remote control
- Remote control module

Yale® Specifications

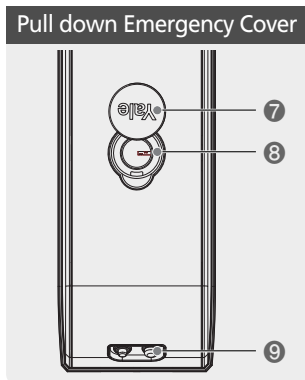
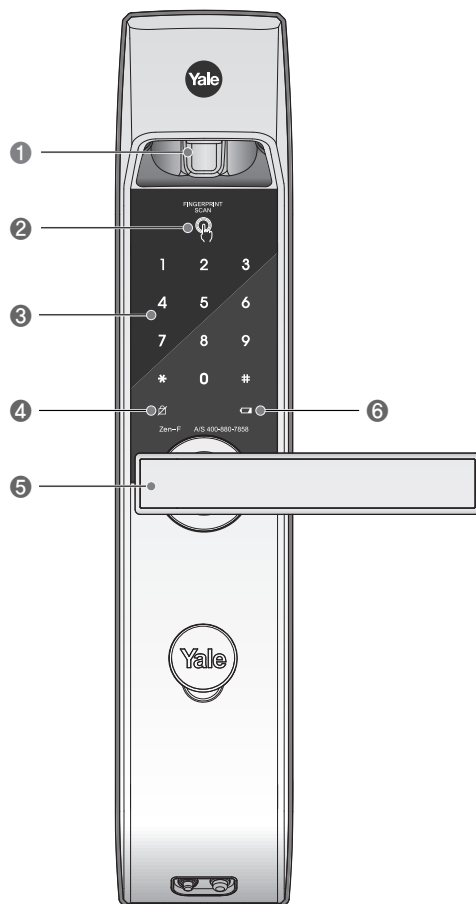
Specifications

Parts		Specifications	Remarks
Front (Front Body)		76.6(W) × 334.6(H) × 28(D) mm, Zinc die-casting	Operating temperature : -15~55°C (5~131 °F)
Back (Main Body)		76.6(W) × 304.6(H) × 35(D) mm, Fiber-glass	
Lever		Zinc die-casting	
Battery		4EA 1.5V AA alkaline batteries (Operating voltage: 4.5 ~ 6 V)	Last up to 1 year (10 times used a day)
Lock case		Steel and SUS304	
Option	Remote Control	Wireless	Optional

- ※ Battery life may vary depending on temperature, moisture levels, frequency of use and the quality of the batteries.
- ※ Please make sure that all parts are included when purchasing the product.
- ※ Optional products may not be available depending on your country or local dealer.

Front

(Front Body, install on the outside of the door)

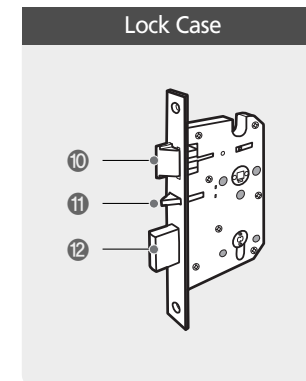
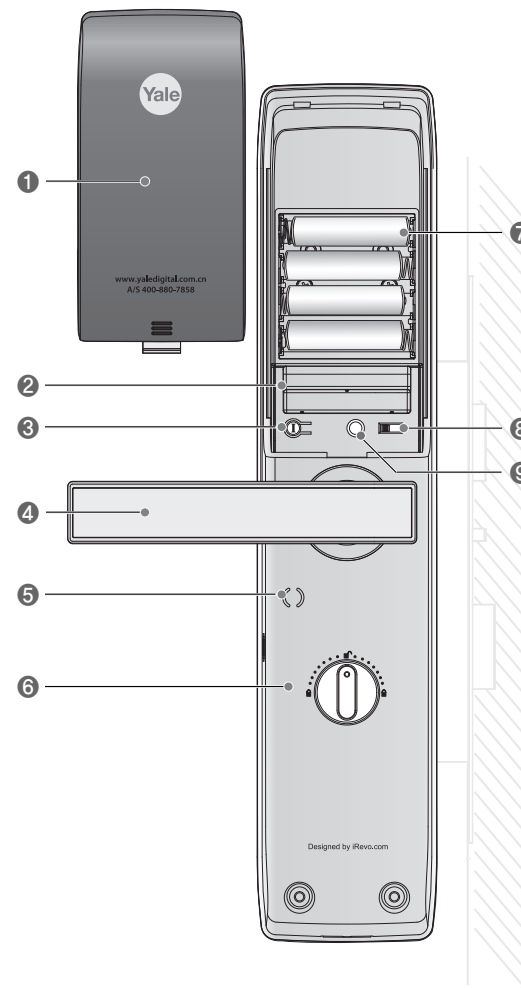


9V Emergency battery (Optional)

1	Fingerprint Sensor
2	Fingerprint Wake Up Sensor
3	Keypad (10-Key)
4	Dead Bolt Jam Lamp
5	Lever
6	Battery Change Lamp
7	Emergency Cover
8	Emergency Key
9	Emergency Power Supply Terminal

Back

(Back Body, install on the inside of the door)



1	Battery Cover
2	Slot for Remote control module (Option)
3	Registration button
4	Lever
5	Speaker Hole
6	Manual thumb turn
7	1.5V AA Alkaline Batteries
8	Volume Control Switch
9	Auto / Manual Lock button
10	Latch Bolt
11	Edge Bolt
12	Dead Bolt

Change Mode

The default setting is **Normal Mode**.

Normal Mode → Safety Mode

Safety Mode can be used for professional and high secure management.



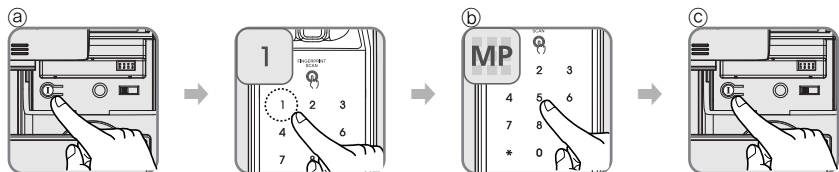
Safety Mode → Normal Mode

It enables you to make separate registration, and open a door through the registered fingerprint or PIN Code.

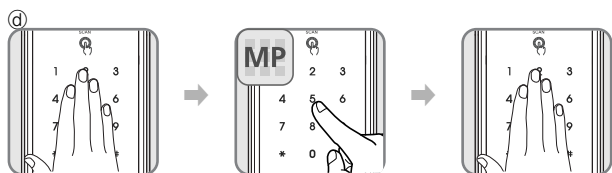


To Use Master PIN Code (PIN Codes should be selected from 6 to 12 digits. [*] and [#] are not allowed.)

› To Register Master PIN Code (Normal Mode)



› To Open Door with PIN Code



Description

- Open the battery cover in the back body and press **I** (Registration) button once.
- Press the registered Master PIN Code (6 to 12 digits) according to the voice guide.
(The default Master PIN Code is '1 2 3 4 5 6 7 8 9 0')
- Press the **I** (Registration) button in the Back Body again to complete the Master PIN Code registration.
- Touch the keypad of the Front Body gently with your palm.

Note

- Make sure to leave the door open when registering a PIN Code because you may accidentally lock a door while trying to register or change a PIN Code the first time.
- The previously registered PIN Code will automatically be deleted when the new PIN Code is registered.
- When registering a PIN Code, the registered PIN Code will be displayed on the keypad (Smart Pad) in sequential order and, then, be disappeared.
- The Master PIN Code is required to register or remove a fingerprint.

Check if a door opens!

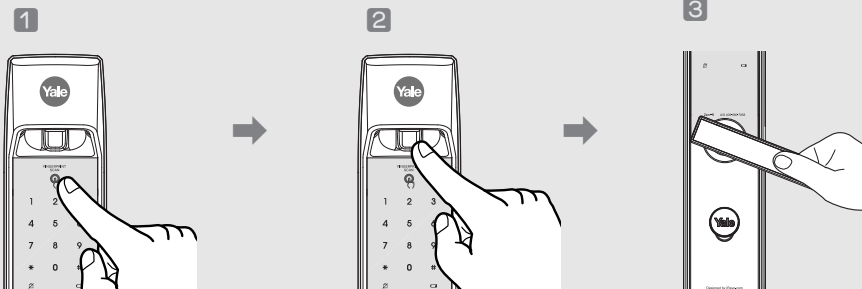


Make sure to examine if the door opens normally with the registered password or fingerprint after the registration is complete.

Fingerprint Guide

It enables you to make separate registration, and open a door through the registered fingerprint or PIN Code.

Repeated Operations



1 Touch the Fingerprint Wake up sensor

2 After the operation lamp is on, sweep the registered fingerprint through the fingerprint sensor in the Front Body .

3 Press the outer handle down

Note

- You may register up to 20 fingerprints.
※ Note that you may not register 20 fingerprints depending on the state of the previously registered fingerprints.
- Scan-type fingerprint modules do not recognize fingerprints with water or foreign materials and set off alarm sounds.
- Make sure to register a PIN Code just in case you fail to register a fingerprint.
- Make sure to leave the door open when registering a PIN Code because you may accidentally lock a door while trying to register or change a PIN Code the first time.
- If an error occurs during registration, the process reverts back the beginning. (entering fingerprint).
- If no more input is made for 20 seconds after registering at least 1 fingerprint, the registration will be complete.
- Duplicate fingerprints may be registered.
- Same fingerprints can be registered repeatedly.

Use Fingerprint

To Register Fingerprint



To Open Door with Fingerprint



Description

- ① After the operation lamp is on, sweep your fingerprint 3 times through the fingerprint sensor according to the voice guide.
- ② Lift open the fingerprint cover and wait for the operation lamp to light on.
- ③ Sweep the registered fingerprint through the fingerprint sensor in the front body.

Note

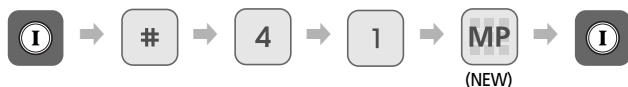
- It enables you to make separate registration, and open a door through the registered to fingerprint or Master PIN Code.
- Make sure to examine if the door opens normally with the registered PIN Code or fingerprint after the registration is complete.

Change Mode

The default setting is **Normal Mode**.

Normal Mode → Safety Mode

Safety Mode can be used for professional and high secure management.



Safety Mode → Normal Mode

It enables you to make separate registration, and open a door through the registered fingerprint or PIN Code.



To Use PIN Code

(PIN Codes should be selected from 6 to 12 digits. [*] and [#] are not allowed.)

› Change Master PIN Code



› Change User PIN Code



› One Time User PIN Code



› To Open Door with PIN s Code



Description

- Ⓐ Open the battery cover in the back body and press [I] (Registration) button once.
- Ⓑ Press the registered Master PIN Code (6 to 12 digits) according to the voice guide.
- Ⓒ Press the [I] (Registration) button in the Back Body again to complete the Master PIN Code registration.

Note

- Make sure to leave the door open when registering a PIN Code because you may accidentally lock a door while trying to register or change a PIN Code the first time.
- The previously registered PIN Code will automatically be deleted when the new PIN Code is registered.
- When registering a PIN Code, the registered PIN Code will be displayed on the keypad (Smart Pad) in sequential order and, then, be disappeared.
- The Master PIN Code is required to register or remove a fingerprint.
- If you forget the PIN Code, you may not register or remove a fingerprint.
- It is advised to register the PIN Code with the same one as a PIN Code in case you lose it.

Caution

- When already Normal Mode, this process doesn't work.
Current Master PIN Code is changed to User PIN Code after changing mode.)
- kind of PIN Codes have to be different.
(There is an error if you try to register same PIN Code)
- One time user PIN Cod is only used for one time.

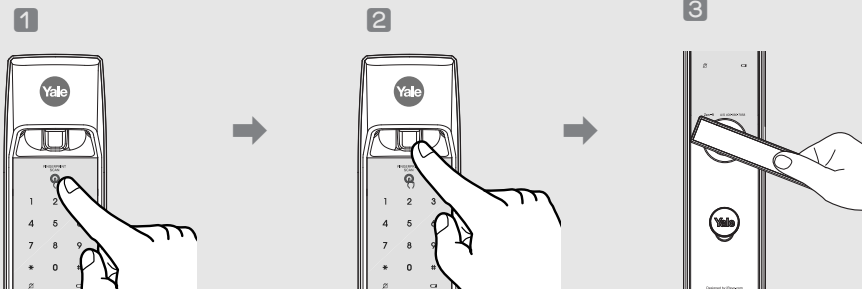
Check if a door opens!



Make sure to examine if the door opens normally with the registered password or fingerprint after the registration is complete.

Fingerprint Guide

Repeated Operations



1
Touch the Fingerprint Wake up sensor

2
After the operation lamp is on, sweep the registered fingerprint through the fingerprint sensor in the Front Body.

3
Press the outer handle down

Note

- You may register up to 20 fingerprints.
※ Note that you may not register 20 fingerprints depending on the state of the previously registered fingerprints.
- Scan-type fingerprint modules do not recognize fingerprints with water or foreign materials and set off alarm sounds.
- Make sure to register a PIN Code just in case you fail to register a fingerprint.
- Make sure to leave the door open when registering a PIN Code because you may accidentally lock a door while trying to register or change a PIN Code the first time.
- If an error occurs during registration, the process reverts back the beginning. (entering fingerprint).
- If no more input is made for 20 seconds after registering at least 1 fingerprint, the registration will be complete.
- Duplicate fingerprints may be registered.
- Same fingerprints can be registered repeatedly.

Use Fingerprint

To Register Fingerprint



To Open Door with Fingerprint



Remove Fingerprint (Safety Mode)

To Delete All Fingerprints



To Delete Each Fingerprints



Description

- (a) Enter 2-digit fingerprint number to register.(01~20)
- (b) After the operation lamp is on, sweep your fingerprint 3 times through the fingerprint sensor according to the voice guide.
- (c) Lift open the fingerprint cover and wait for the operation lamp to light on.
- (d) Sweep the registered fingerprint through the fingerprint sensor in the front body.

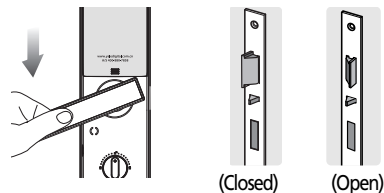
Note

- It enables you to make separate registration and deletion, and open a door only when the fingerprint number and the fingerprint match.

Open Door from Inside

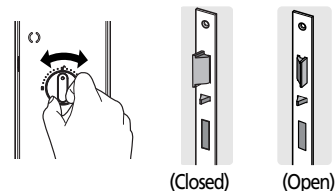
› To Open Door with Lever

Lower and push the interior handle at the same time.



› To Open with Manual Device for Emergencies

Turn the Manual thumb turn to Open side. Keep pressing the Safe Handle button. And then, lower and push the handle at the same time. The Safe Handle button is found on the interior handle.

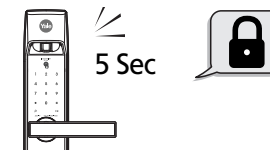


Lock Door

› To Close Door from Outside

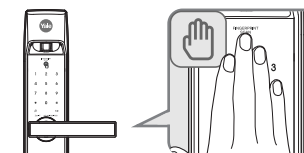
Auto Lock status

The built-in Auto Lock sensor automatically locks a door within 5 seconds after the door was closed.



Manual Lock status

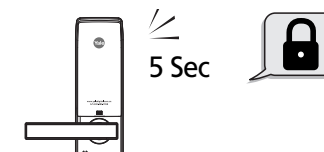
Touch the keypad in the front body gently with your palm to lock a door.



› To Close Door from Inside

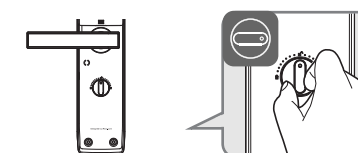
Auto Lock status

The built-in Auto Lock sensor automatically locks a door within 5 seconds after the door was closed.



Manual Lock status

Turn the Manual Open/Close Device to Close side to lock a door.



Note

- Make sure to fully familiarize yourself with the operations for the Manual Device and the Safe Handle in preparation for emergencies.

Note

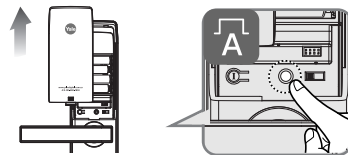
- Even after a door was locked by the Auto Lock function, please check again if the door was completely closed and locked.

Auto / Manual Feature Auto Lock setting locks a door within 5 seconds after the door was closed.

› To Set Auto/Manual Feature

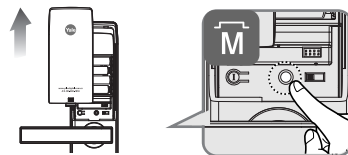
Auto Lock Setting

Press the interior Auto/Manual Setting button to keep the button up.



Manual Lock Setting

Press the interior Auto/Manual Setting button to keep the button down.

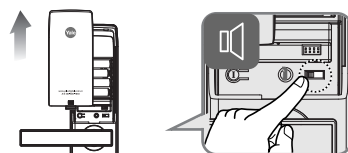


Volume Setting Feature It enables you adjust the volume of various sounds from the product.

› Volume Setting

To set volume switch

The operation sound volumes are adjusted according to the Volume Switch Setting.
(2 : Louder / 1: Lower / 0 : Mute)



Note

- Be careful that the set bolt won't detach when modifying the Safe Handle Setting.
- Even when the operation sound is set as 'Mute', the error and alarm sounds will go off.

Alarm Feature The alarm sound continues for 30 minutes or until it is reset.

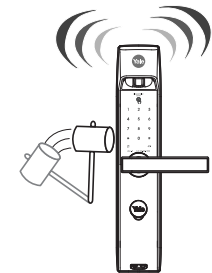
› Break-in / Damage Alarm

Break-in:

When someone tries to Break-in by opening a door when it was locked, the alarm will go off.

Damage:

When the front body was damaged due to forced separation or drilling, the alarm will go off.



› Release Trespass/Damage Alarm

Method 1: Enter the registered Master PIN Code or User PIN Code

Method 2: Enter the registered fingerprint.

Method 3: Press the interior ⓘ button for 5 seconds.

Note

- Even after a door was locked by the Auto Lock function, please check again if the door was completely locked.
- If a door is open when the Auto Lock is not properly operated, the Break-in alarm might go off.
- If the alarm goes off due to damage, fire, or break in, the numbers on the keypad will light up clockwise. (It repeats the status for 30 minutes with alarm sound.)

Voice / Melody Feature

You may select the operation sound that is set off when a door is open and closed.

› To Set Voice/Melody Feature



Language Setting

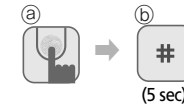
English and Chinese languages are supported.

› To Set Language

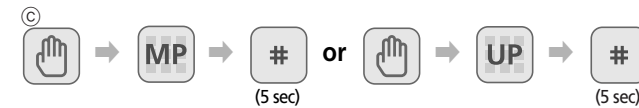


Forced Lock

› Outside Forced Lock Setting - Fingerprint



› Outside Forced Lock Setting - PIN Code



Description

- (a) Enter the registered fingerprint on the fingerprint sensor when the operation lamp(LED) is on.
- (b) Press the [#] button for 5 seconds. (A beeping sound sets off for 3 times.)
- (c) Touch the keypad of the front body gently with your palm.

Note

- If you try to open a door with the handle or the Manual Open/Close Device from inside when the Outside Forced Lock is set, the alarm goes off.

Yale® Safety Feature

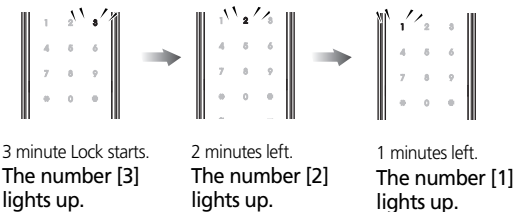
3-minute Lock Feature

At 3-minute Lock mode, no button, besides those in the back body, will work.

› 3-minute Lock Mode Display

If a PIN Code or a fingerprint that is yet to be registered is entered for 5 consecutive times, 3-minute Lock mode is on and nothing will work for 3 minutes.

(Wrong trial of PIN Code 5 times and Fingerprint 10 times)



› Release Trespass/Damage Alarm

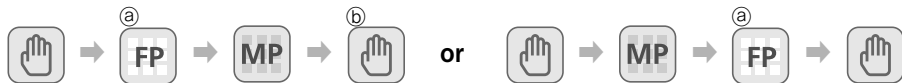
Method 1: Press the interior ① button for 5 seconds.

Method 2: Turn the interior handle.

Open Door with fake PIN code Only Normal Mode.

It is the most effective feature when you are concerned about your PIN Code being accidentally exposed when you have company or in the similar situations.

› To Open Door with false PIN code



Description

① Enter the fake PIN code

② Touch the keypad with your palm gently or press [*] button to end.

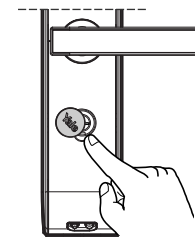
Note

- 3-minute Lock mode won't affect the alarm mode and is sustained even after the product is rebooted.
- Once 3-minute Lock mode is on, the fake PIN code mode won't work until the next normal verification (fingerprint verification, normal PIN Code, open door from inside). In this case, please open a door with your correct PIN Code.

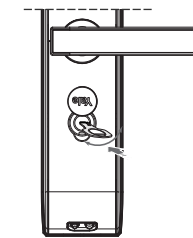
Emergency mechanical key override

› Emergency mechanical key override

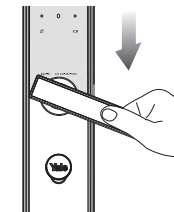
- Please operate the lock with the mechanical key when there is a problem to the lock or
- Forgotten security code
- Electronic malfunction



Pull down the emergency cover



Location of key hole



Press the outer handle down

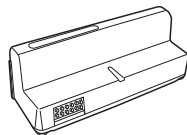
Note

- Keep the mechanical override key in a safe place.
- Otherwise, you may not get a free after-sales service even within during the warranty period.

Remote Control Module

› Remote control Module

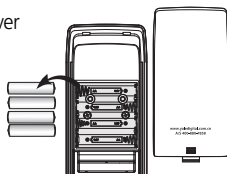
Buy the Remote control Module and install it to link the remote control.



› Install Remote Control Module

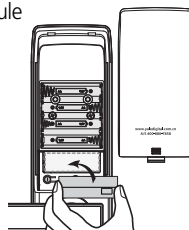
1 Remove batteries

Open the battery cover in the back body and remove all batteries.



2 Install Remote Control Module

Equip the Remote control Module to the connector.



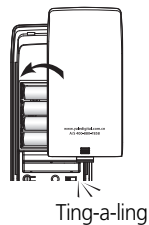
3 Insert batteries

Insert all the batteries by checking the [⊕, ⊖] connector.



4 Confirm the installation

If you hear a 'ting-a-ling' sound, the Remote control Module has been installed correctly. Close the battery cover.



Note

- The operation status may only be examined through the remote control.

Remote Control

Not only FSK method but also the wireless encryption algorithm has been applied.

› To Register Remote Control



› To Release Remote Control



Description

① Press the SET button of the remote control (Up to 5 Remote controls)

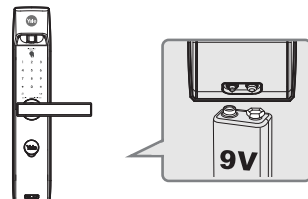
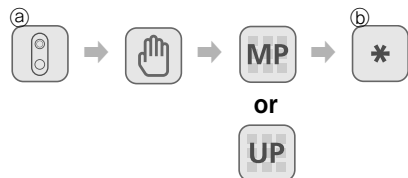
Note

- The wireless encryption algorithm resorts to the floating ID technology where the wireless PIN Code is changed every time the remote control is operated.

Emergency Power Supply for Discharged Batteries

You may open a door when contacting the 9V battery.

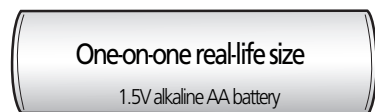
》To Supply Emergency Power



》To Replace Battery

1 Expiry Period

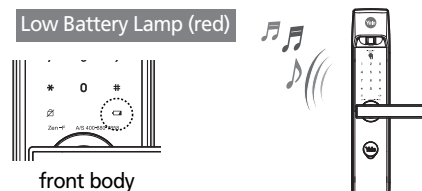
The product uses four 1.5V alkaline AA batteries.
They may sustain 1 year if used 10 times a day.
(Users are advised to use authentic alkaline batteries.)



2 Low Battery Alarm

You must replace all 4 batteries for the following cases:

- The Low Battery Lamp on the front body lights on
- The alarm melody goes off
(a nursery rhyme starting with ting-a-ling melodies)
- The voice guide goes off ("Please replace batteries.")



Description

- ① Open the emergency cover. Keep contacting the 9V battery onto the emergency power supply terminal.
- ② Press [*] button. (Once the motor is fully operated, you may detach the 9V battery.)

Note

- The battery duration varies in the temperature, humidity, the number of use, and the quality of the battery.