



2 Hinge Bolts

- Protects hinged side of door from force attack
- Deters intruder access through door



USE ON
TIMBER
DOORS

WHITE
FINISH

SUITABLE REPLACEMENT FOR CHUBB V-WS12-2-WE

FOR MORE INFORMATION SEE BACK OF PACK



● Features

- Simple to use, easy to fit
- Suitable for hinged timber doors and french windows where the hinges are exposed

● Tools required

- Drill
- 19mm (3/4") and 25mm (1") drill bits
- 19mm (3/4") Chisel
- Bradawl
- Pozidrive screwdriver
- Pencil
- Ruler

● Tools required

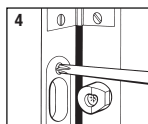
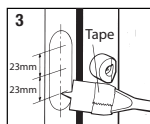
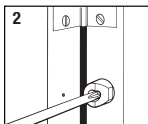
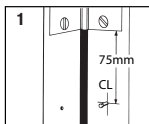
1. Mark horizontal line across door edge, 75mm (3") above the bottom hinge and below the top then intersect this with a vertical centre line. Knock in the pin supplied at this point so it projects approximately 5mm (3/16"). Close the door so pin marks fixed frame, repeat for other hinge. (Fig 1)

2. Remove pin and carefully drill a 19mm (3/4") dia hole, **ensure drill is level and straight**, 25mm (1") deep in door edge. Position bolt in hole with angled edge facing away from hinges and secure with long screw. **Do not overtighten.** (Fig 2)

3. Mark fixed frame with vertical line on pin head mark. Intersect with horizontal line 23mm above and below pin head mark. Using a 25mm (1") drill bit carefully drill a 13mm (1/2") deep hole, (depth of hole can be marked on drill bit with tape) at the two points marked. Chisel out to shape so plate fits flush in fixed frame. (Fig 3)

4. Mark holes with bradawl and secure with two screws. **Do not overtighten.** Check operation. (Fig 4)

NB. Equivalent imperial sizes are approximate



The world's favourite lock

www.yale.co.uk E-mail: lockinfo@yale.co.uk

V-WS12-2-WE



ISSUE 3