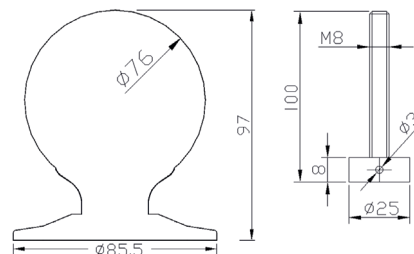


# DOORS



## ELITE CENTRAL KNOB

The stylish Elite Stainless Steel fixed Central Knob suites perfectly with other products in the Trojan Stainless Steel range. The Central Knob is manufactured in 316 Stainless Steel, giving excellent corrosion resistance and comes with a 25 year guarantee.



### TECHNICAL SPECIFICATION

#### Product Material Specifications:

- 316 Stainless Steel

#### Testing:

- Corrosion tested in excess of 1000 hours based on BS EN1670

#### Box Quantity:

- 3

The Elite Stainless Steel range includes T Bar Handle, Central Door Knob, Escutcheon, Door Handle, Door Knocker, Numerals and Letters.

**Part Code**  
**1CK001**



### SPECIAL FEATURES SUMMARY:

- Manufactured in 316 Stainless Steel
- 76mm Central Knob diameter
- Fixing method – screw the M8 bolt (high grade Stainless Steel) directly into the tapped hole on the base of the centre knob
- Suites with other Trojan Stainless Steel furniture for a totally coordinated, modern door suite
- Fixing available to support PVC-U and Composite Doors
- M8 bolt has the option of a clear washer to protect the door face

\* Guarantee subject to correct installation and maintenance

**Trojan Manufacturing Group Limited**  
Fryers Road, Bloxwich, Walsall, West Midlands, WS2 7LZ

T: +44 (0)1922 713933 F: +44 (0)1922 713890

E: [info@trojangroup.com](mailto:info@trojangroup.com) W: [www.trojangroup.com](http://www.trojangroup.com)

Trojan Group operate a continuous development and improvement programme and therefore reserve the right to amend designs and specifications.

**ASSA ABLOY**

An ASSA ABLOY Group brand Registration No: 2096505  
School Street, Willenhall, West Midlands, WV13 3PW

ELITE CENTRAL KNOB