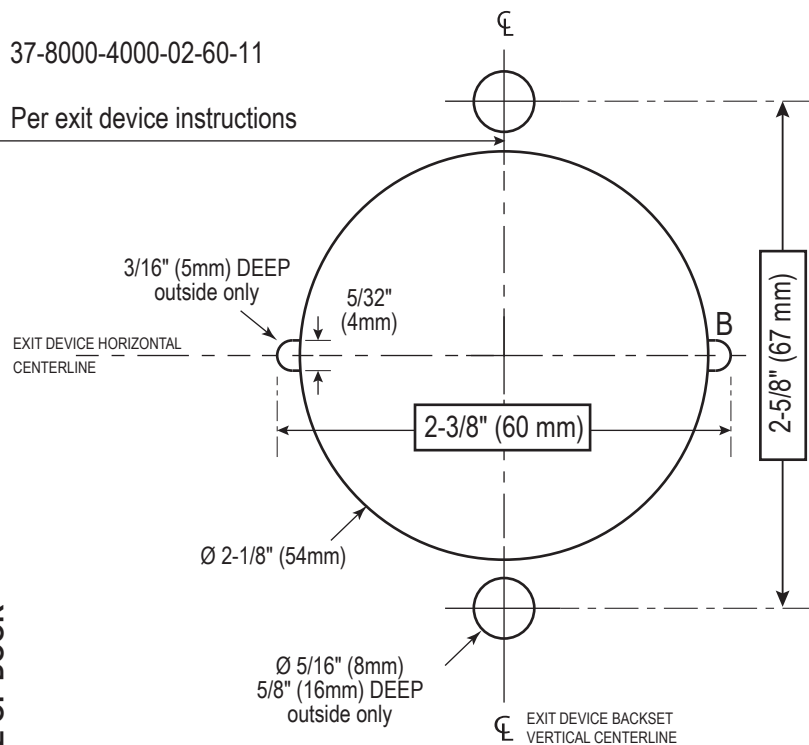


37-8000-4000-02-60-11

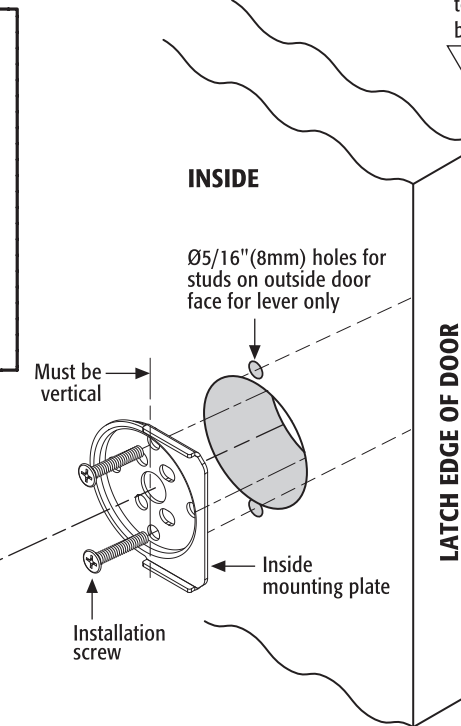
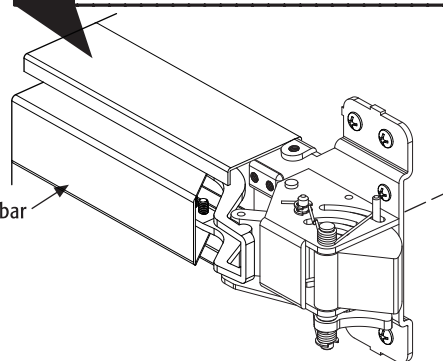
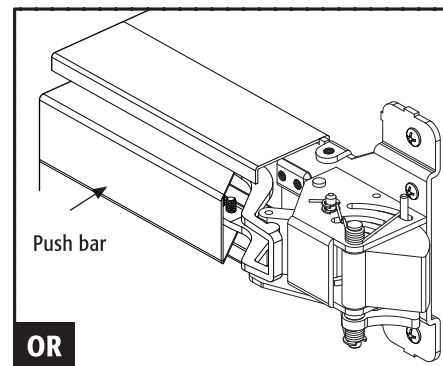
Per exit device instructions



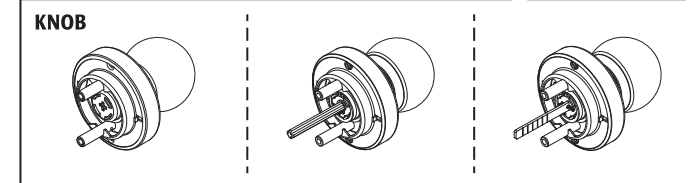
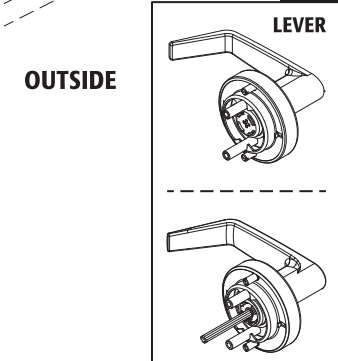
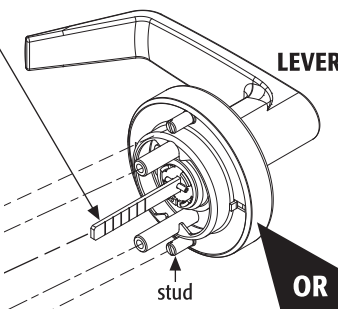
OUTSIDE KNOB(LEVER) INSTALLATION INSTRUCTIONS

1. Follow the drilling instructions on template. Drill $2-1/8"$ (54mm) holes on inside and outside door faces.
2. Follow the drilling instructions on template. Drill (2) $5/16"$ (8mm) holes on outside door face for lever only.
3. Insert knob (or lever) tail piece through $2-1/8"$ (54mm) hole on outside door face.
4. Cut off tail piece, if necessary, to have $3/16"$ (4.5mm) projection beyond inside door face.
5. Place inside mounting plate on inside door face and tighten 2 installation screws securely.
6. Install push bar.

Notice: Do not remove the stud of the lever when connected with Exit Panic Device.



Cut off tail piece, if necessary, to have $3/16"$ (4.5mm) projection beyond inside door face.



OUTSIDE KNOB(LEVER) WITH CLUTCH FUNCTION INSTALLATION INSTRUCTIONS
When installing 80LS/KS in storeroom function with clutch, the tailpiece need to be horizontal to the floor as drawing show below.

