

The Yale logo is a yellow circle with the word "Yale" in black text.

Yale



Lockmaster AutoEngage

Installation and adjustment guide

Trusted every day

The incorrect installation of prefabricated door sets can lead to a number of operation and performance issues. In this guide, we will give you our expert advice to help to avoid these common issues.

Fitting a composite door with Lockmaster AutoEngage

Figure one

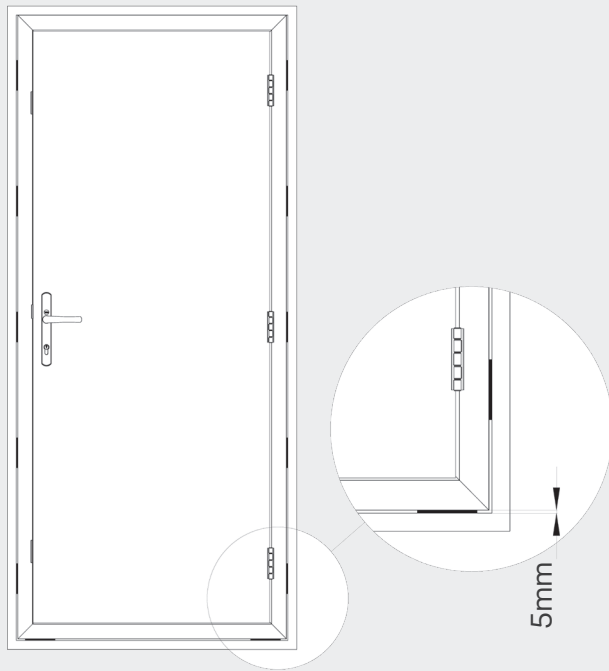
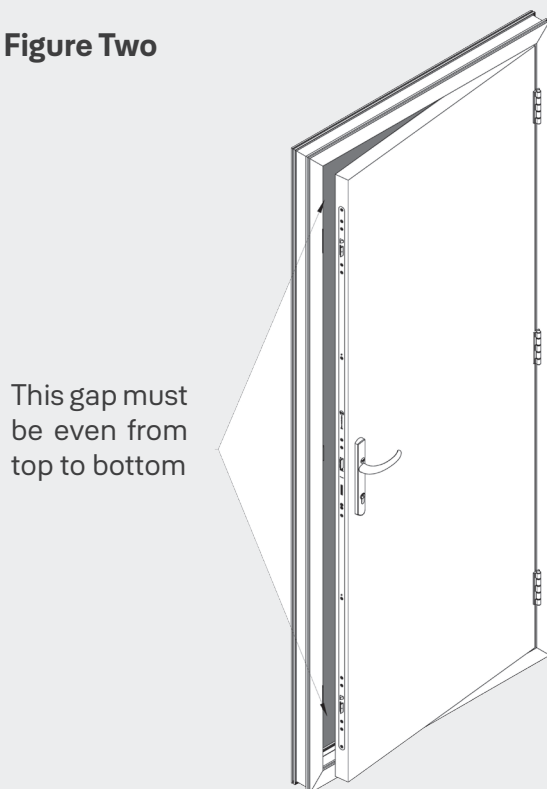


Figure Two



- Check the aperture size against the door set. We recommend that there is at least a 3-5mm gap around the frame to ensure correct installation.
- Below the door where the frame will sit, place a 5mm packer on both sides of the door. (See figure one).
- Place the door and frame into the correct position and open the door leaf to 90°. Place a suitable packer below the opening edge of the door leaf to bring the hinge side of the door into a vertical position.
- Using the appropriate fixings, fix the hinge side of the door set ensuring it is positioned vertically in both planes. Please note that you should be using 4 or 5 fixings equally placed at approximately 150mm from the door frame corners.
- Please ensure that there is no bow in both door planes. Increase or decrease the packing where necessary (See figure one).
- Bring the door leaf to a closed position and adjust the packing below the frame on the lock side to achieve a consistent gap at the top of the door between the leaf and frame. As a guide align the gearbox latch to the centre of the latch casting on the centre keep (See figure two).
- On the lock side, fix the frame into place at the top of the door frame.
- Bring the door leaf to a nearly closed position and align the frame at the next fixing point to achieve an even gap (See figure two), repeat this step at each fixing point to accommodate for any bow or twist in the door leaf.
- Once all door fixings are secure, bring the door leaf to the closed position. Check and adjust the packing behind the fixings to ensure a consistent 3-5mm air gap between the lock and the top of the keeps (See figure two).
- Finally, pack or point beneath the cill and seal the door frame to the brickwork.

Lockmaster AutoEngage Lock Guide

Figure three

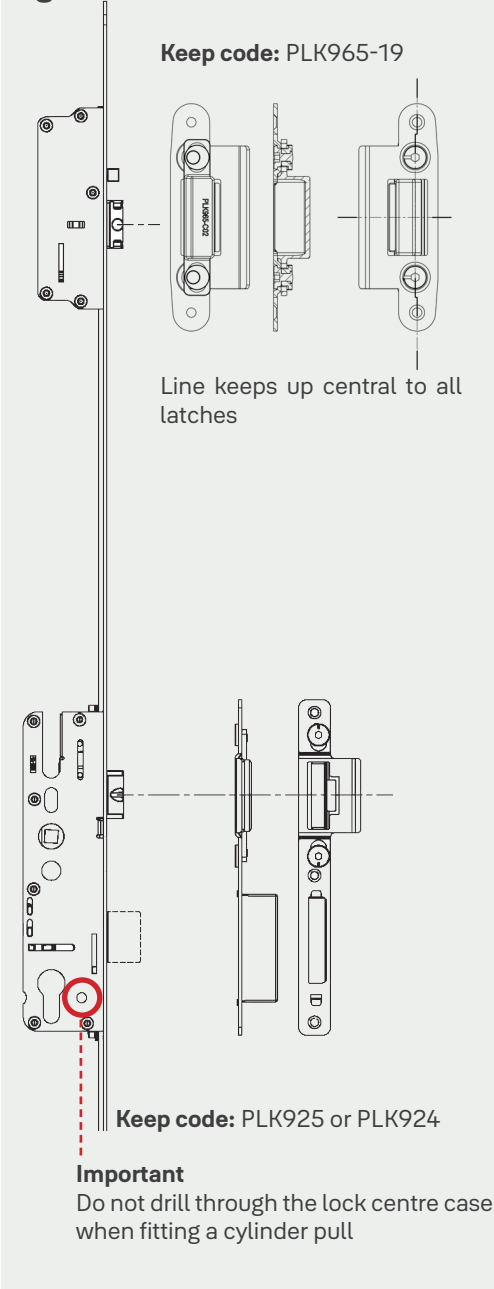
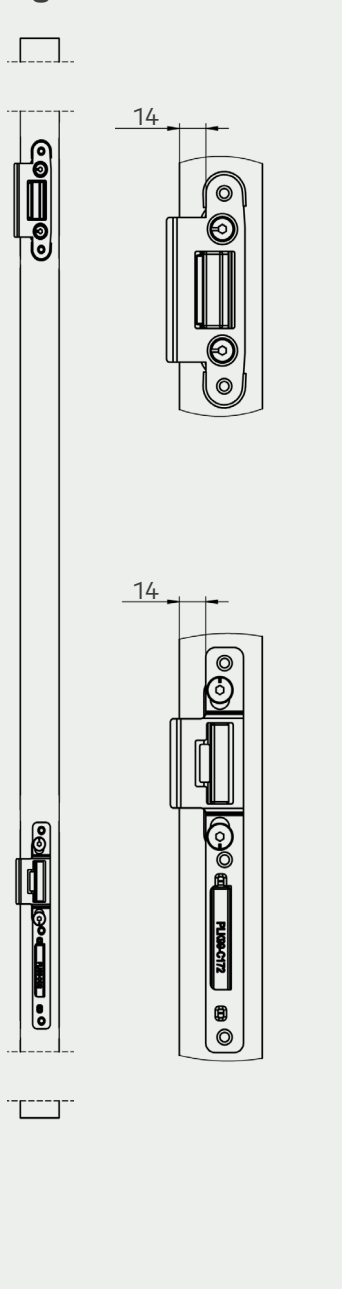


Figure four



Keep Positioning

- Please see figure three for a visual check of the keep alignment.
- The centre of the keep apertures should all align with the centre of the latches (See figure three).
- Profile specific keep layout drawings are available upon request.

Keep Alignment

- Please ensure that the keep alignment is 14mm from the edge of the door frame profile (See figure four).

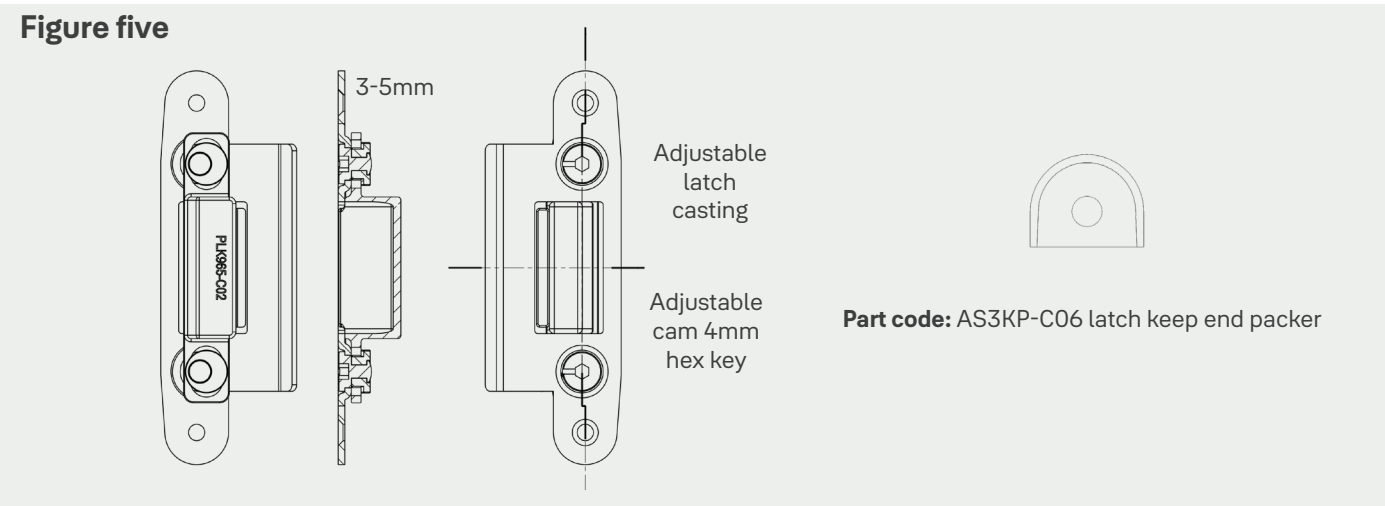
Door Gap

- There should be a 3-5mm gap between the lock faceplate and the face of the latch casting (See figure five).
- Security latch keep packer available if required to achieve the correct air gap (AS3KP-C06 latch keep end packer).
- The contact / sealing pressure of the leaf to the frame is achieved on all security latches.

Screw recommendations

- Yale recommends 4.0 X 40 CPP Multipurpose Wood Screw – Carbon Steel - Zinc screws are used on composite door applications.

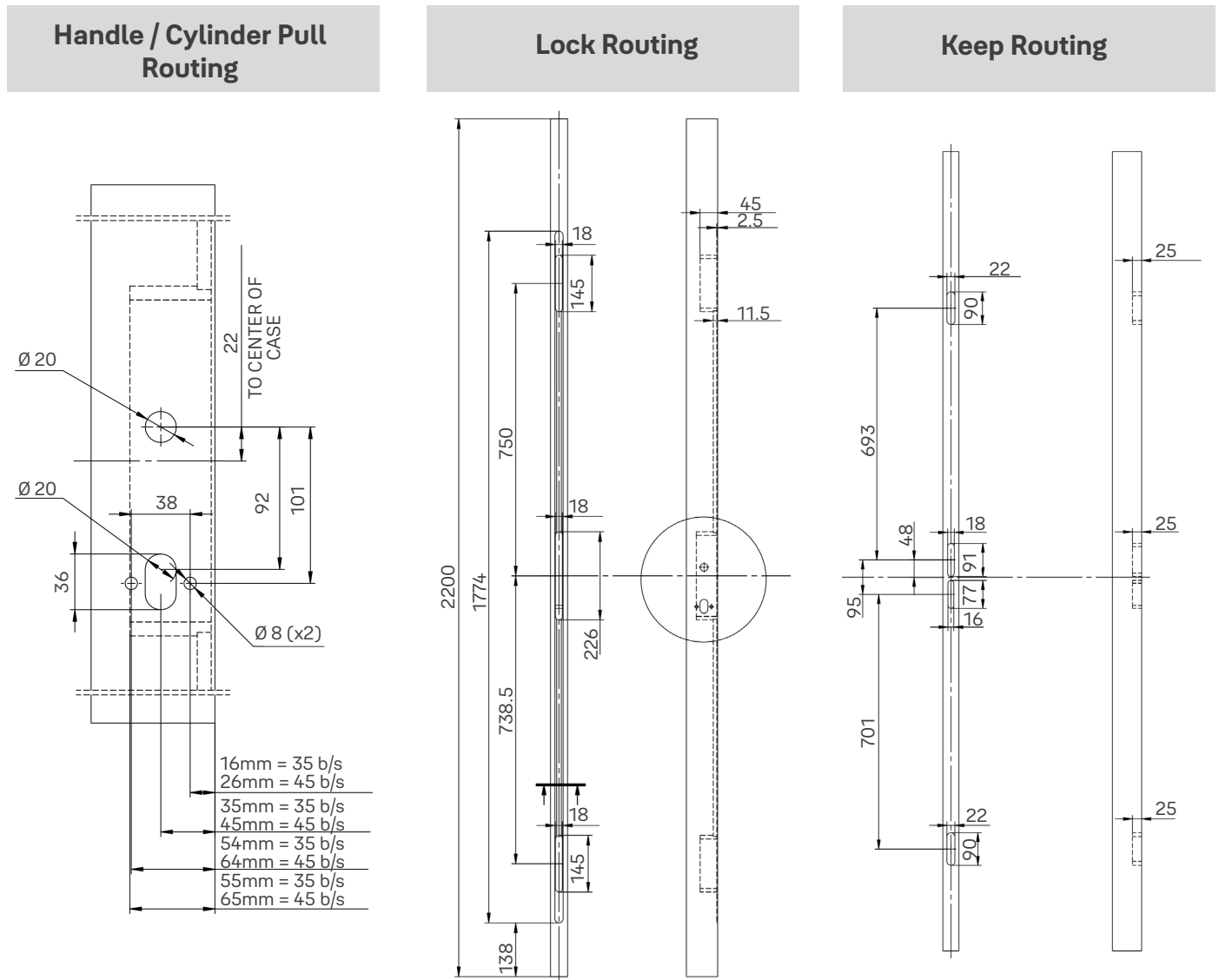
Figure five



Lockmaster AutoEngage - **Standard Routing Prep**

Classic multipoint lock - YAS1-3500

The incorrect routing can lead to a number of operation and performance issues.

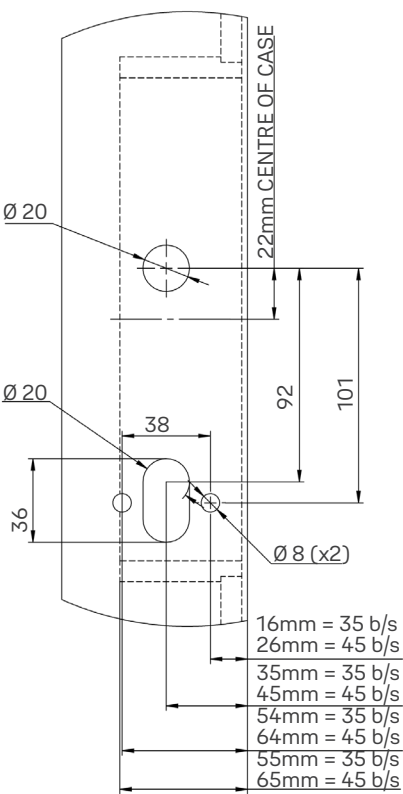


Note: If a 16mm faceplate lock is being used without a carrier please refer the Yale Technical Services team.

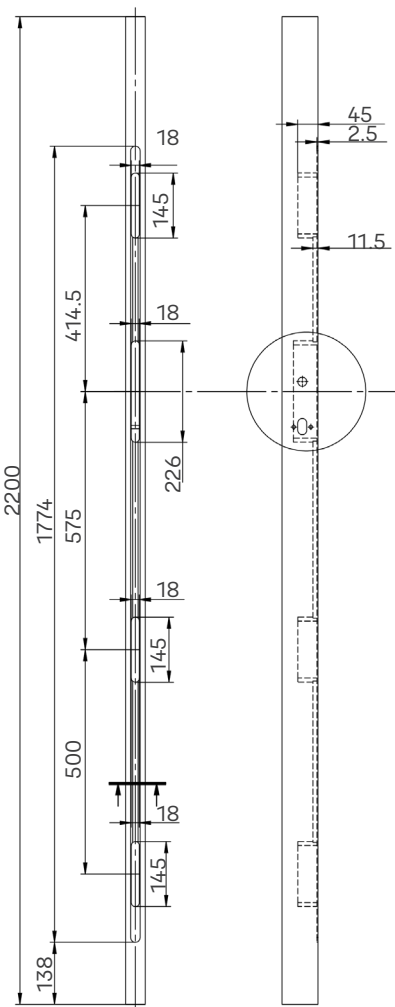
Lockmaster AutoEngage - **Standard Routing Prep**
Heritage multipoint lock - YAS1-3500-TH

The incorrect routing can lead to a number of operation and performance issues.

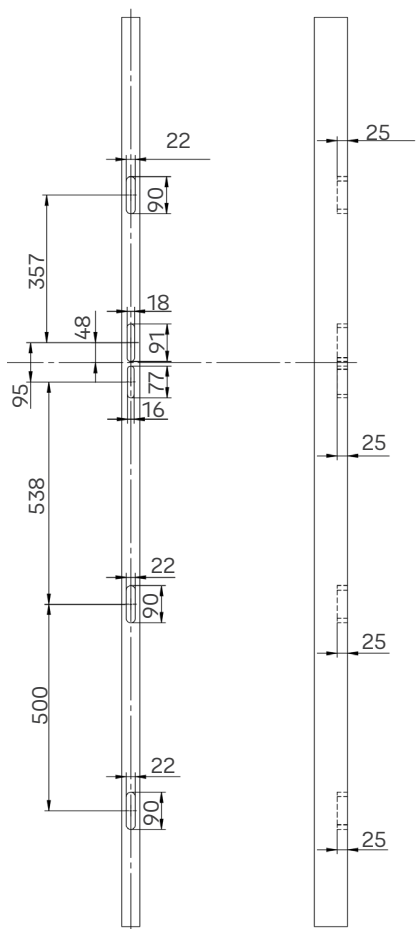
Handle / Cylinder Pull Routing



Lock Routing



Keep Routing



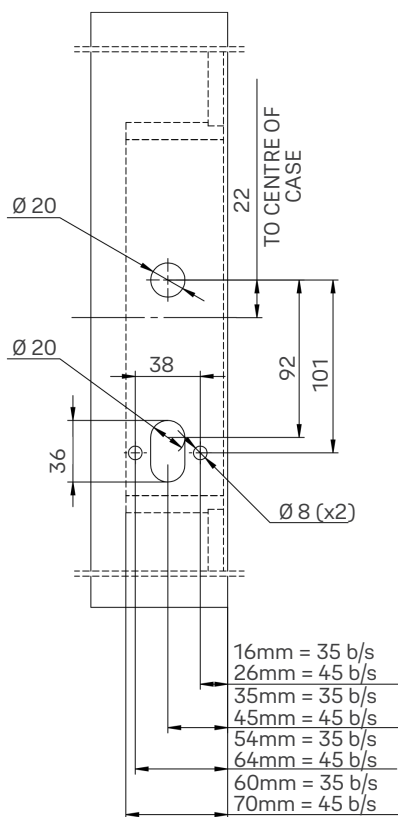
Note: If a 16mm faceplate lock is being used without a carrier please refer the Yale Technical Services team.

Lockmaster AutoEngage - **Fire Door Routing Prep**

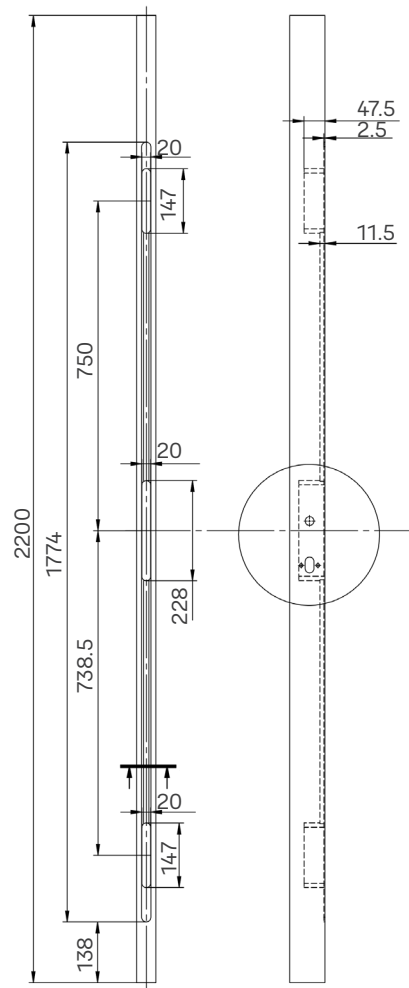
Classic multipoint lock - YAS1-3500-FD

The incorrect routing can lead to a number of operation and performance issues.

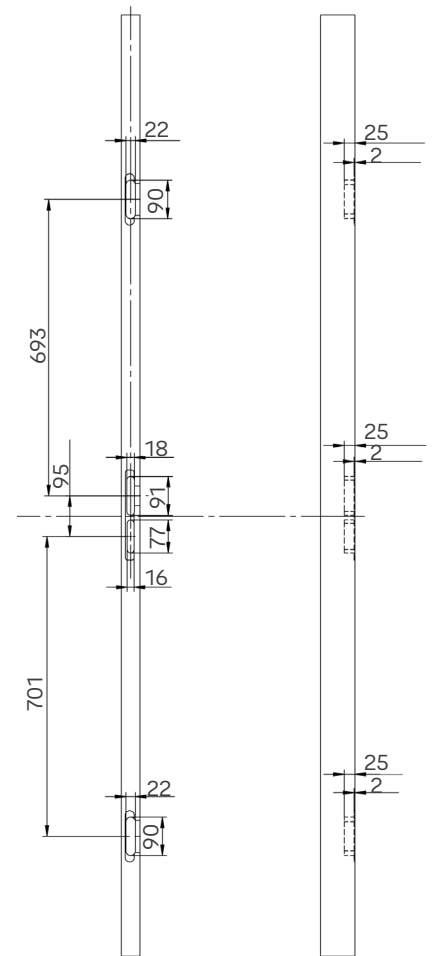
Handle / Cylinder Pull Routing



Lock Routing



Keep Routing



The Lockmaster AutoEngage has been designed for use on independently accredited Fire Doors. Please ensure that you have the correct test evidence in place before using this product as part of a Fire Door assembly.

Yale Door and Window Solutions does not hold or provide Fire Door test evidence for this product. The responsibility for ensuring its compliance is solely down to the door set manufacturer.

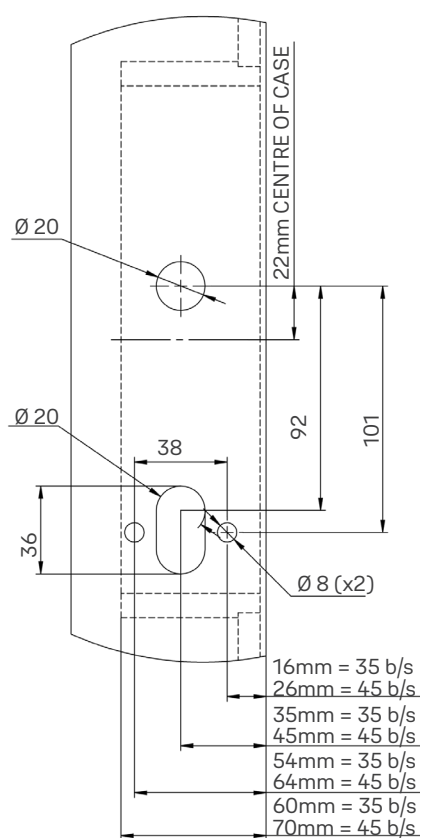
Prep rev. 4 - March 2022

Lockmaster AutoEngage - **Fire Door Routing Prep**

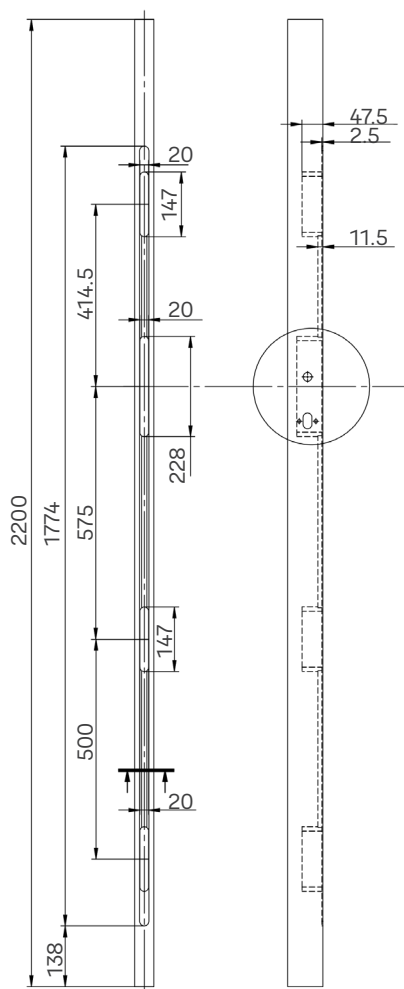
Heritage multipoint lock - YAS1-3500-TH-FD

The incorrect routing can lead to a number of operation and performance issues.

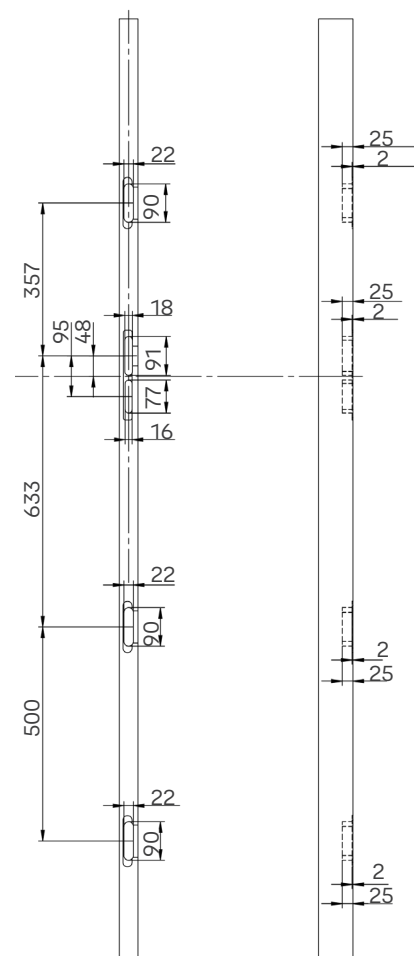
Handle / Cylinder Pull Routing



Lock Routing



Keep Routing



The Lockmaster AutoEngage has been designed for use on independently accredited Fire Doors. Please ensure that you have the correct test evidence in place before using this product as part of a Fire Door assembly.

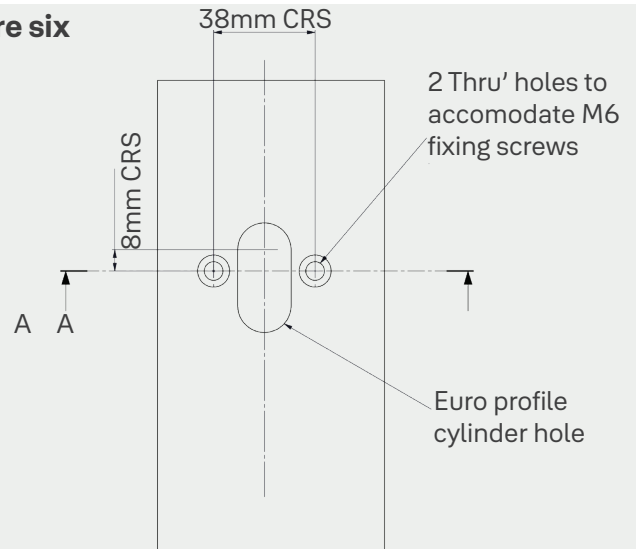
Yale Door and Window Solutions does not hold or provide Fire Door test evidence for this product. The responsibility for ensuring its compliance is solely down to the door set manufacturer.

Prep rev. 4 - March 2022

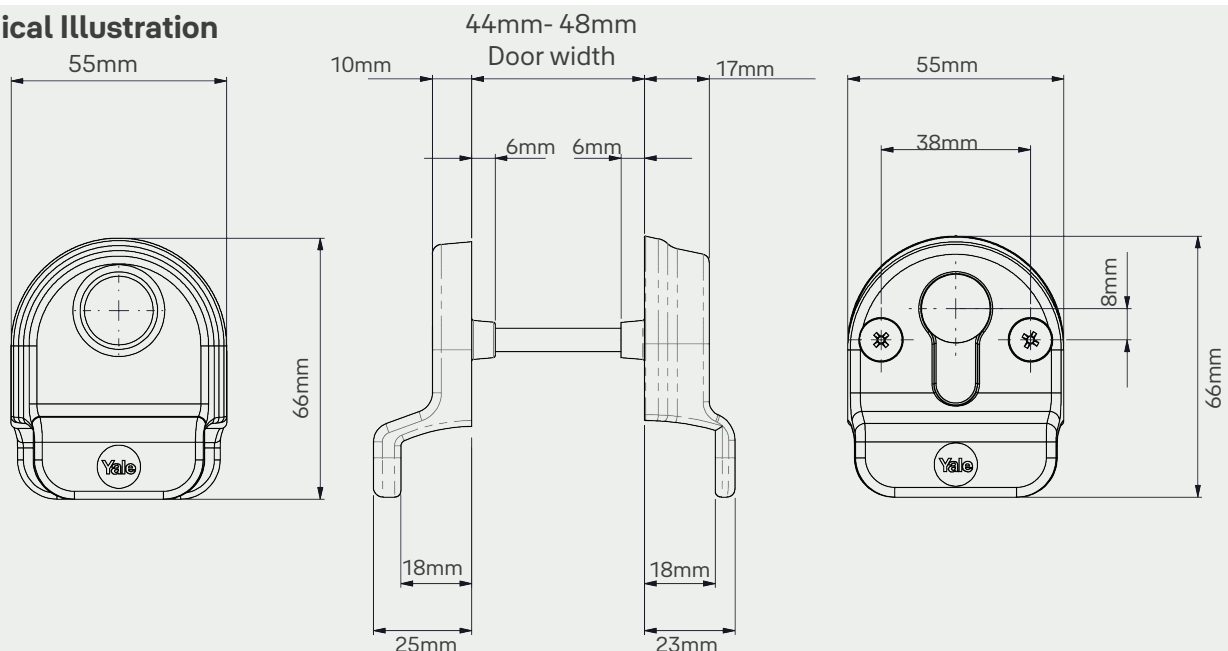
When fitting a cylinder pull

Please ensure an Ø8mm diameter is used to drill through the door to accommodate the M6 fixing screws (see figure six).

Figure six



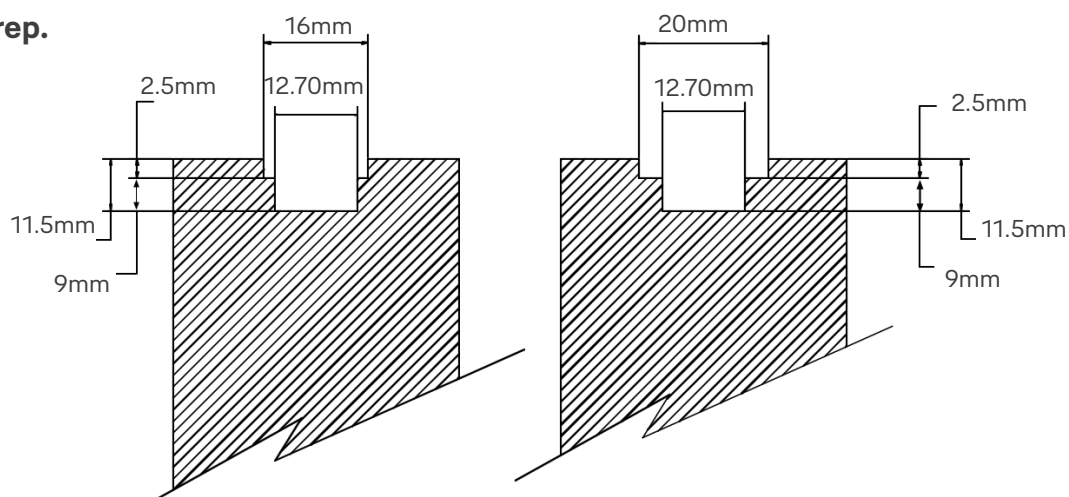
Technical Illustration



Euro groove preparation

Should a euro groove be required – please route as per the illustrations below for either a 16mm or 20mm faceplate lock variant.

Route Prep.



Maintenance instructions

Yale recommends that all moving components are lubricated using a non-acidic mineral oil at least twice a year and surface cleaned with a damp cloth. The product may need to be adjusted to ensure satisfactory operation.

Frequently asked questions

Problem	Cause	Solution
Difficulty closing the door (security latches appear to be firing prematurely)	Dry contacting trigger	Apply a light lubrication to the security latch trigger - operate trigger to ensure free movement
	On the lock side, there is a narrow air gap	Adjust the hinges to give a 3-5mm gap between the keep and lock faceplate
Security latches not deadlocking	Wide air gap to the lock side	Adjust the hinges to give a 3-5mm gap between the keep and lock faceplate
Stiff key operation	Incorrectly adjusted keeps	Adjust keeps accordingly
	Deadbolt fouling within the keep	Adjust keeps accordingly
	Slow key operation, allowing the security latches to contact the keeps	Relieve the pressure on the security latches by gently pulling on the door externally or pushing internally to operate

THE YALE BRAND

Yale is trusted by millions of people everyday to keep what's important to them safe. Our innovations have protected their homes, families and belongings for over 180 years. We have expanded from being a leader in mechanical lock engineering to innovating connected smart locks and homes. Because we always make every effort to push the boundaries in a changing world. We were there for your grandparents (and probably theirs) and we'll be there for your children. Today, and every day to come.

Due to a continuous programme of development the company reserves the right to make alterations without notice. (Products which are not a stocked item will be subject to a longer lead time which needs to be agreed with your Yale representative).

Part of ASSA ABLOY

Yale DWS
School Street, Willenhall, West
Midlands WV13 3PW, UK
T: 01902 366800 F: 01902 369041
www.yaledws.co.uk

Version 1.8
July 2022
ASSA ABLOY©