



Yale Postmaster Professional TS008 FD30 Letterplate

Installation Guide



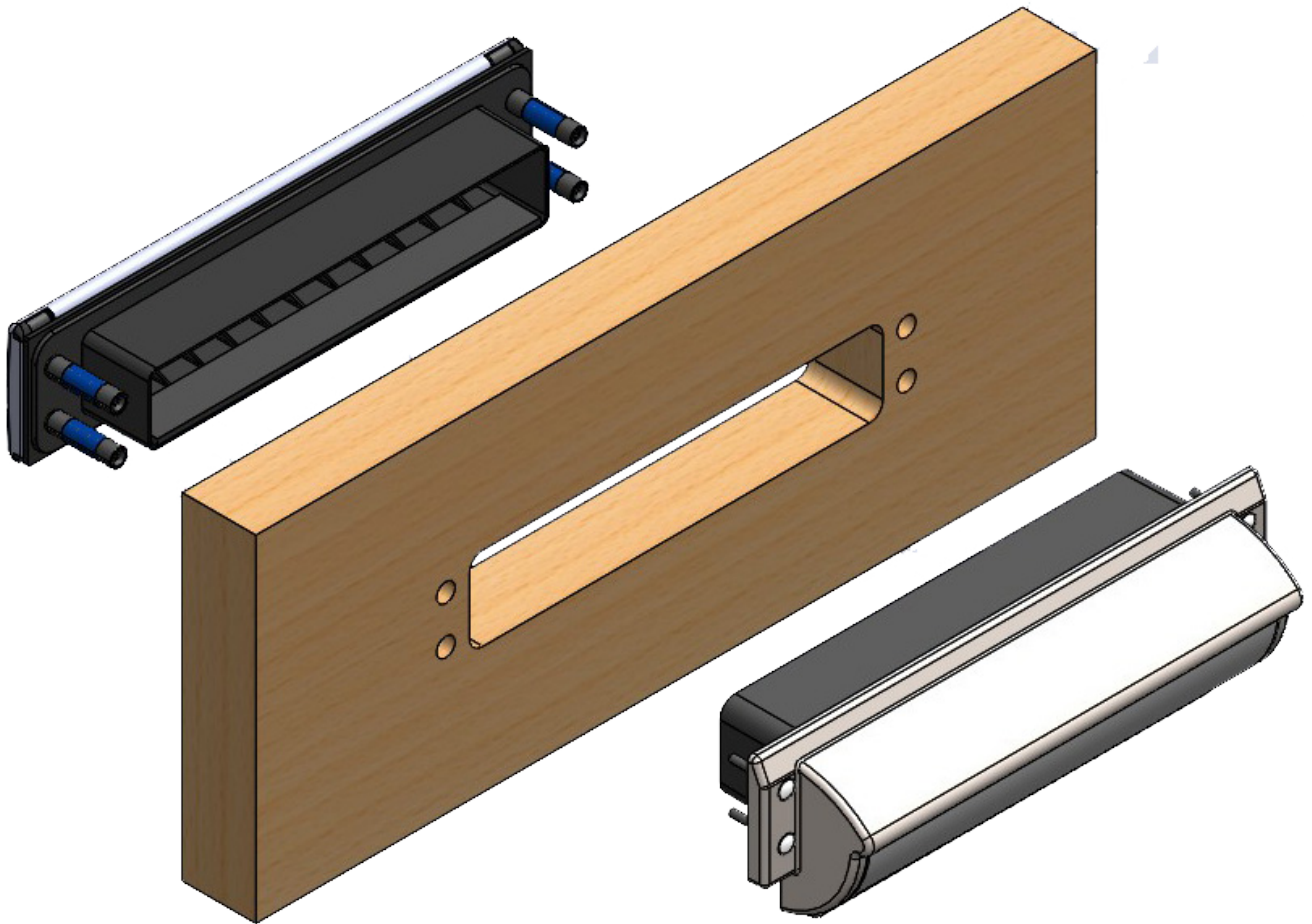
The Yale Postmaster Professional TS008 FD30 letterplate has been independently tested as part of a doorset to withstand at least 30 minutes of protection against fires. The letterplate passes the test requirements of BS 476-22:1987. This guide includes:

- Assembly Components
- Routing Prep
- Installation Instructions

Trusted every day

Components

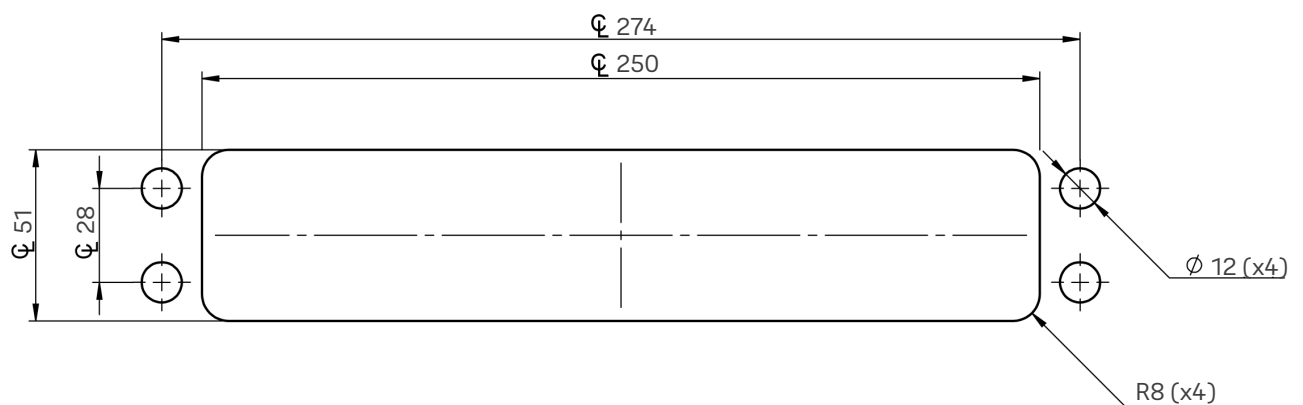
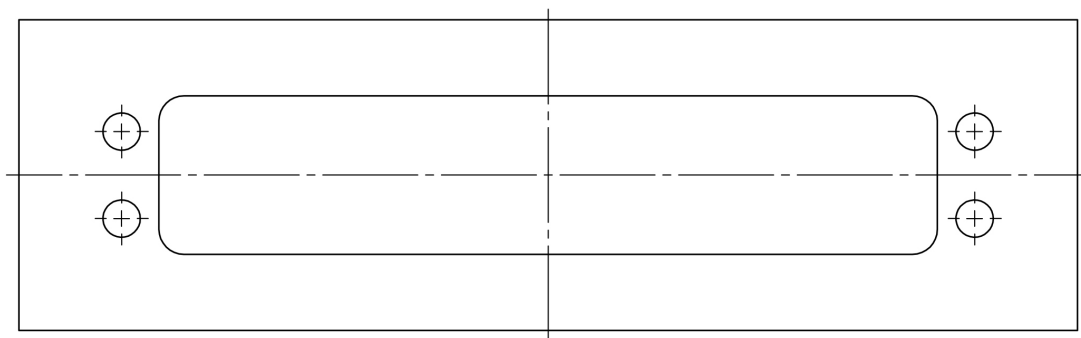
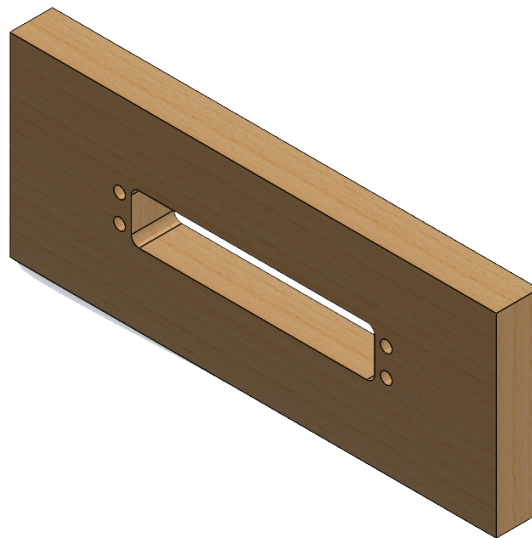
Before installing the Yale Postmaster Professional TS008 FD30 Letterplate, please check that all of the following components are present.



Routing Prep

Suitable for 44mm to 54mm door leaves

It is important to ensure the door is prepped correctly, we recommend using a CNC machine or a jigsaw or a router.

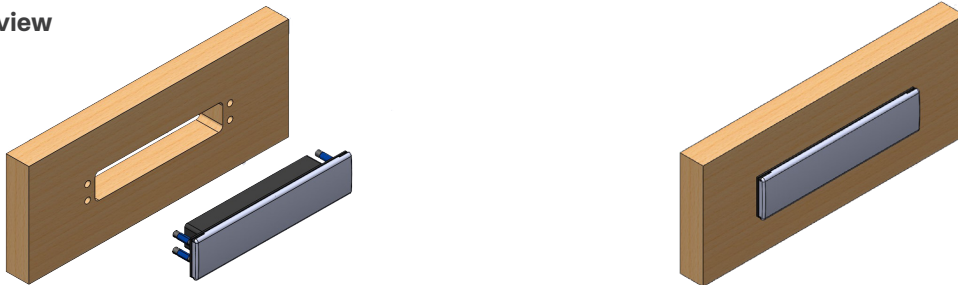


Installation Instructions



1. The Yale Postmaster letterplate is designed for use on fire doors and is supplied with all fire intumescent material pre-fitted. The intumescent material is a crucial fire door component, please do not proceed with the installation if all intumescent material is not present.

External door view



2. Position the external letterplate assembly into the aperture

Internal door view



3. Repeat this step positioning the internal letterplate assembly into the aperture.

Internal door view



4. Secure in place from the internal side using x4 M4 fixing screws provided. To avoid distortion and over-compression of the gasket please ensure the screws are not over tightened.

Internal door view



5. Push 4 screw cover caps into place and remove the protective film

Your installation is now complete.

Disclaimer: The Yale Postmaster Professional Letter Plate has been designed for use on independently accredited Fire Doors. Please ensure that you have the correct test evidence in place before using this product as part of a Fire Door assembly. Yale Door and Window Solutions does not hold or provide Fire Door test evidence for this product. The responsibility for ensuring its compliance is solely down to the door set manufacturer.

Maintenance

Yale recommends that all moving components are lubricated using a non-acidic mineral oil at least twice a year and surface cleaned with a damp cloth. The product may need to be adjusted to ensure satisfactory operation.





This installation manual is to be used in conjunction with the Postmaster Professional TS008 FD30 letterplate range.

Partcode: 0793-4000

THE YALE BRAND

Yale is trusted by millions of people every day to keep what's important to them safe. Their homes, families and belongings. Our innovations have protected homes and given peace of mind for 180 years. We have expanded from a mechanical lock innovator to leading the evolution of connected smart locks and homes. Because when we do things, we do them properly. We were there for your grandparents (and probably theirs) and we will be there for you. And for your children. Today, and every day to come.

Due to a continuous programme of development the company reserves the right to make alterations without notice. (Products which are not a stocked item will be subject to a longer lead time which needs to be agreed with your Yale representative).

Part of ASSA ABLOY

Yale DWS
School Street, Willenhall, West Midlands
WV13 3PW, UK
T: 01902 366800 F: 01902 369041
www.yaledws.co.uk

July 2022 V1.2 Yale©