



The Fortify 3-Star Cylinder lock from Yale

Inner strength you can rely on.



Trusted every day

The Yale logo, consisting of the word "Yale" in a bold, black, sans-serif font, centered within a bright yellow circle.

Setting standards since 1840

Everything we are today, we owe to the inspirational ingenuity of Linus Yale Senior and Linus Yale Junior. The Yale lock tradition started around 1840 when Linus Yale Senior opened up a lock shop specialising in handmade bank locks. Inspired by a 4000 year old Egyptian wooden lock, he built the first models of the pin-tumbler lock.

Today, the pin-tumbler lock by Linus Yale Junior is the most widely used type of door lock in the world.



Cylinder specification

Available cylinder type variants:



Double Key-Key Euro Profile Cylinder



Double Thumb-turn Euro Profile Cylinder

Available cylinder finishes:



Double Paired Alike Euro profile cylinder



Dual colour

Yale Fortify 3 Star Cylinder

Features



Inner strength - Dedicated central bridge delivers protection from external attack.



Anti-Snap - The external section of the cylinder is designed to snap under attack, leaving your home safe and secure.



Anti-Bump - Specialised side pins provide bump resistance.



Anti-Pick - The unique technology features a combination of tumbler and side pins, designed to resist lock picking.



Anti-Drill - Hardened steel protection incorporated in the cylinder provides resistance against drill attacks.

Key type:	Sawn cut key
Number of keys supplied as standard:	3
Protection:	Anti-bump, anti-snap, anti-pick, anti-plug extraction, and anti-drill
Suitable for:	PVCu, Timber, Composite and Aluminium
Available cylinder types:	Double Key-Key, Thumb-turn and Paired Alike – ideal for French door applications
Available cylinder finishes:	Dual colour

£1000 Anti-Snap Guarantee

We are proud to offer our £1000 Anti-Snap Guarantee on the Yale Platinum 3 Star Cylinder.

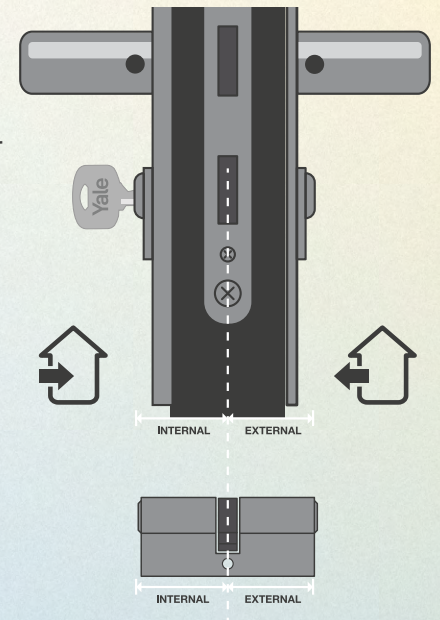
In the unlikely event that your cylinder is snapped under attack due to a forced break-in, we will give you £1000 compensation for any distress and inconvenience caused, that's how confident we are in our product.



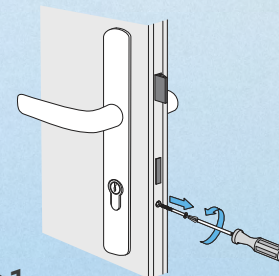
Yale

How to measure your door cylinder

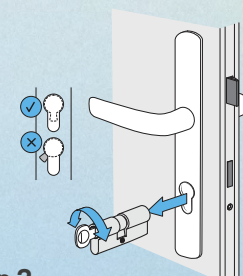
The first measurement taken from the internal side of the door.



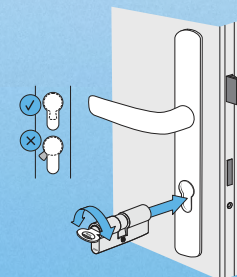
How to change your door cylinder



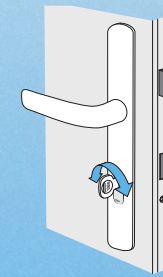
Step 1.
Remove (but keep safe) the screw to release the cylinder.



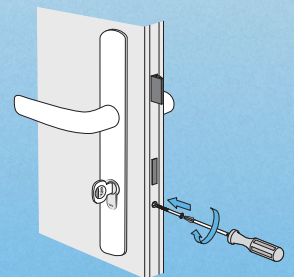
Step 2.
Remove the old cylinder. Use the key to align the cam with the cylinder housing in order to pull out the cylinder.



Step 3.
Insert the new Yale cylinder and turn the key to check alignment.



Step 4.
Check if the key turns and the lock operates correctly.



Step 5.
Replace the screw to secure the cylinder.



Technical Specifications



Maintenance and Lubrication

Yale recommends regular lubrication of your Yale cylinder locks to ensure continuous optimal performance and operation.

PTFE based lubricant is recommended. Apply a small amount of lubricant to the key, insert it into the cylinder and rotate the key a couple of times.

£1000 Anti-Snap Guarantee Terms & Conditions



Please scan the QR code for full terms & conditions of the £1000 Anti-Snap Guarantee.

THE YALE BRAND

Yale is trusted by millions of people every day to keep what's important to them safe. Our innovations have protected their homes, families and belongings for over 180 years. We have expanded from being a leader in mechanical lock engineering to innovating connected smart locks and homes. Because we always make every effort to push the boundaries in a changing world. We were there for your grandparents (and probably theirs) and we'll be there for your children. Today, and every day to come.

Yale DWS

School Street, Willenhall,
West Midlands WV13 3PW, UK
T: 01902 366800 F: 01902 369041
www.yaledws.co.uk

March 2024 © ASSA ABLOY

Due to a continuous programme of development the company reserves the right to make alterations without notice. (Products which are not a stocked item will be subject to a longer lead time which needs to be agreed with your Yale representative).

Part of ASSA ABLOY