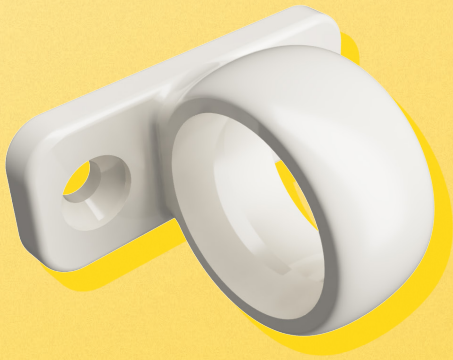


The Yale logo, consisting of the word "Yale" in a bold, black, sans-serif font, centered within a bright yellow circle.

Vertex™

Pole Ring

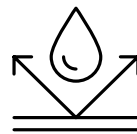
The Yale Vertex™ range has notably been designed to complement and maintain the traditional aesthetics seen on sash windows, a framework that is most commonly found in British period-style homes.



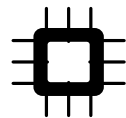
- Suitable for use on all uPVC, Timber and Aluminium windows
- Designed for appearance and functionality
- Available in a range of finishes
- Manufactured in high performance die-cast zinc
- Included within the Yale Lifetime Security Guarantee

A circular logo with a thick black border. Inside the circle, the number "1" is positioned above the word "YEAR" in a bold, sans-serif font.

**1
YEAR)**
**SURFACE FINISH
GUARANTEE**



BS EN 1670: Grade 4
240 Hours NSST



Cross Hatch Adhesion
Tested

Trusted every day

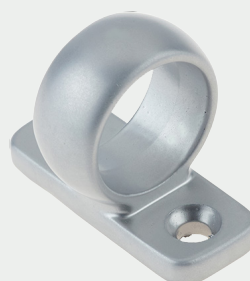
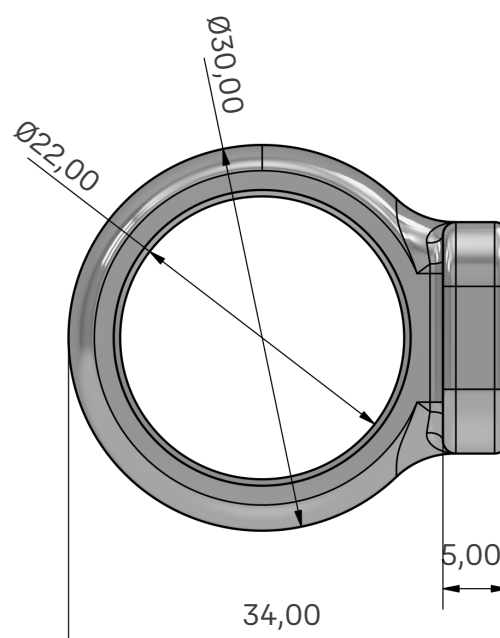
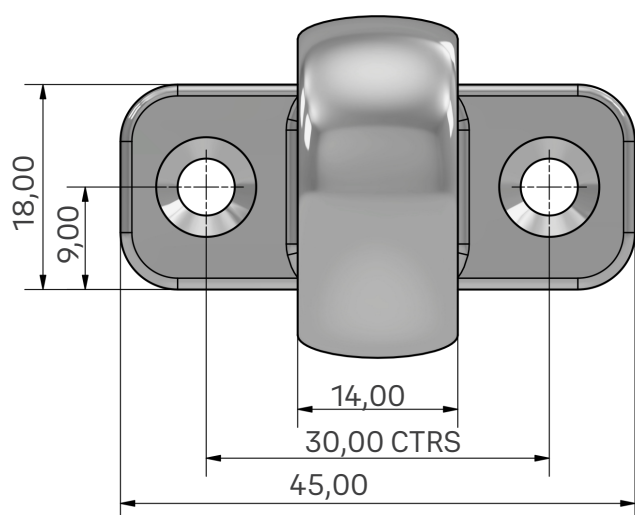


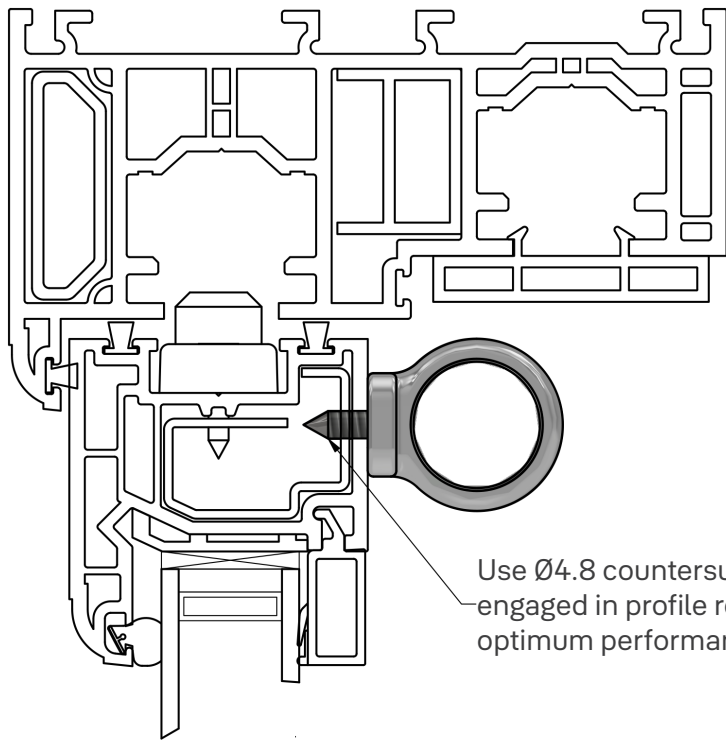
Product	Profile Sytem	Part code
Pole Ring - Chrome	All window systems	YVSPR01-CH
Pole Ring - Champagne gold	All window systems	YVSPR01-CG
Pole Ring - Silver	All window systems	YVSPR01-SL
Pole Ring - White	All window systems	YVSPR01-WH
Pole Ring - Satin Black	All window systems	YVSPR01-SB
Pole Ring - Anthracite Grey	All window systems	YVSPR01-AG
Pole Ring - Brushed Stainless Finish	All window systems	YVSPR01-BSF
Pole Ring - Satin Chrome	All window systems	YVSPR01-SC
Pole Ring - Bronze	All window systems	YVSPR01-BRZ
Pole Ring - Gold	All window systems	YVSPR01-GO

Maintenance	Yale recommends this product is surface cleaned with a damp cloth only and is kept free from any building materials and debris which could affect the mechanism.
--------------------	--



Designed for uPVC,
Timber and Aluminium
vertical sliding sash
windows





Typical window cross-section for Pole Ring

Use Ø4.8 countersunk screws fully engaged in profile reinforcement for optimum performance

Colour Variants

Chrome
Champagne gold
Silver
White
Satin Black
Anthracite Grey
Brushed Stainless Finish
Bronze
Satin Chrome
Gold

Packaging

Boxed in 100's

Material Specification

Die-cast Zinc