

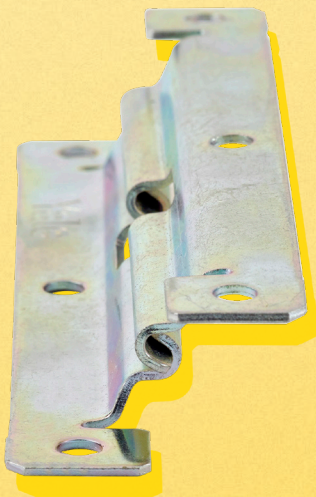
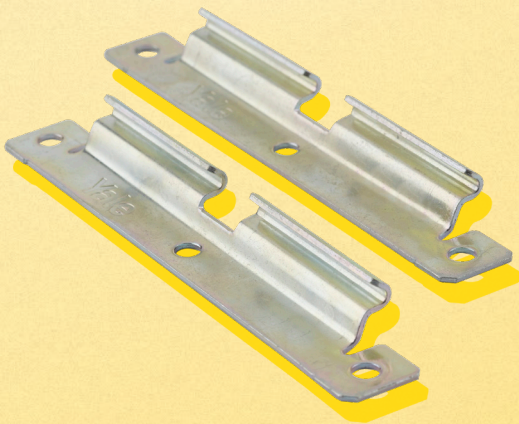
The Yale logo, consisting of the word "Yale" in a bold, black, sans-serif font, centered within a bright yellow circle.

Yale Door Hinge Protector

Simple and Effective Security for PVCu Doors

Enhance the Security of Your PVCu Doors with the Yale Hinge Protector.

The Yale Door Hinge Protector is a modern solution designed to replace traditional door dog bolts, offering a flexible and reliable security upgrade for all PVCu profiles.

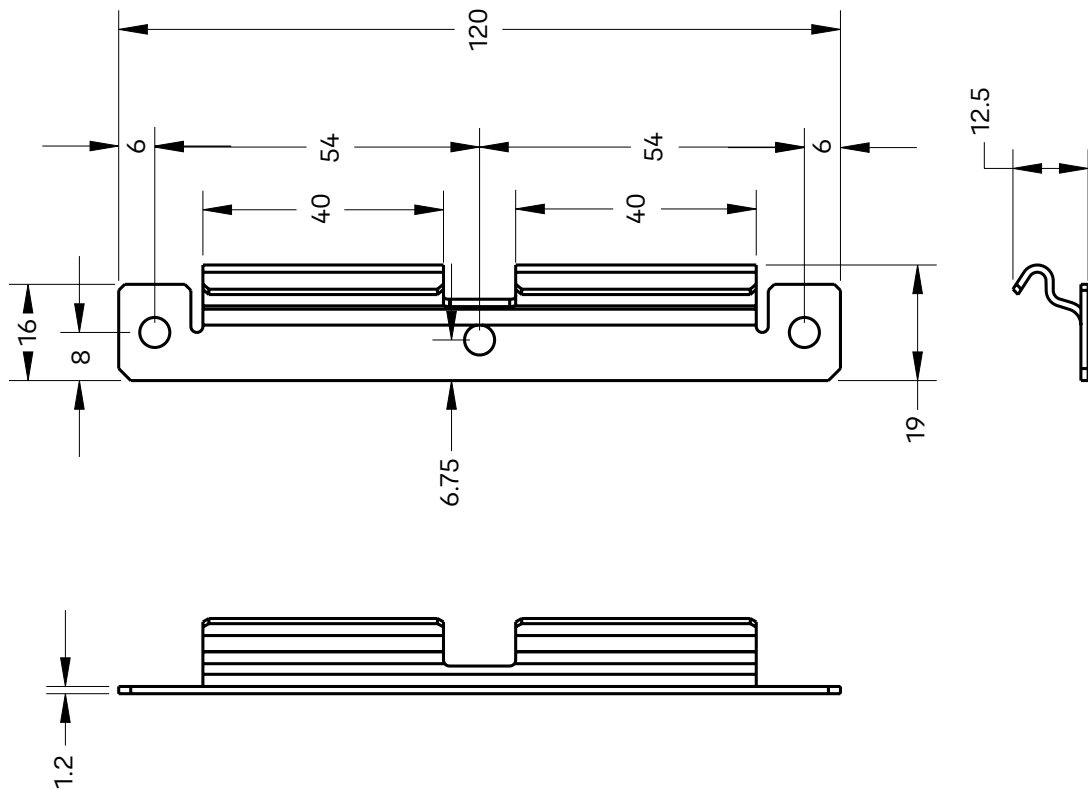


- **Quick and Easy Installation:** The fitting process is straightforward and efficient with no routing required.
- **Retrofittable:** Easily enhance the security of your existing doors without the need for major modifications.
- **Suitable for PVCu Profiles:** Specifically designed for use on PVCu profiles, ensuring a perfect fit.
- **Simple, Face-Fitted Installation Process:** The hinge protector can be installed quickly and easily with a face-fitted process.
- **Cohesive Design:** Identical sash and frame components create a cohesive and attractive look for your door, enhancing both style and security.
- Upgrade your PVCu doors with the Yale Hinge Protector for an effortless, stylish, and secure solution.

Trusted every day

Maintenance	Other than periodic visual inspection for loose fixings and degradation, no specific maintenance is required. If cleaning is required use a mild detergent or a damp cloth, do not use acid, alkaline, solvent or abrasive cleaning agents or materials.
Box Qty	500
Material Spec	CS70 carbon spring steel with a trivalent zinc passivate electroplated finish

Part Number	Description
Y-QG001	Yale Door Hinge Protector



Due to a continuous programme of development the company reserves the right to make alterations without notice. (Products which are not a stocked item will be subject to a longer lead time which needs to be agreed with your Yale representative).

© ASSA ABLOY
 July 2024/V1
www.yaledws.co.uk
 Yale DWS
 School Street, Willenhall, West Midlands
 WV13 3PW, UK
 T: 01902 366800 F: 01902 369041