



# Essential Hinges

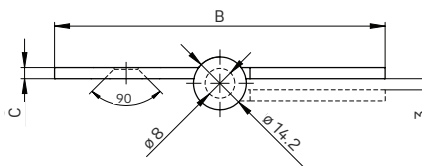
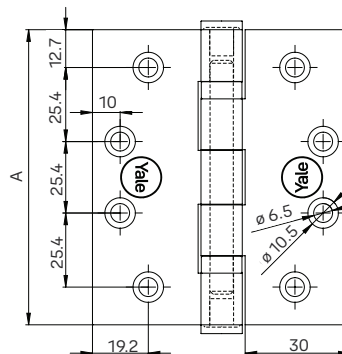
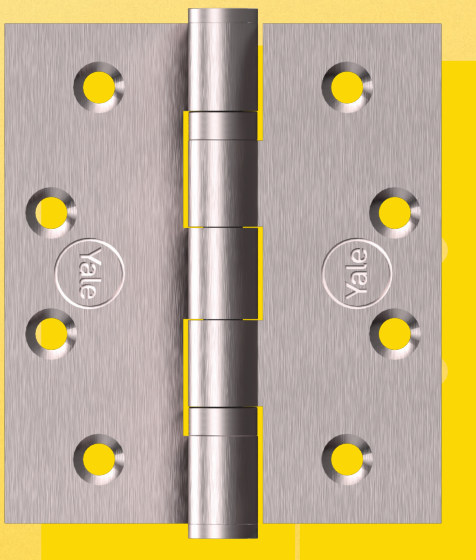
The Yale Essential Hinges are engineered from top-quality materials to provide exceptional durability and corrosion resistance, making them ideal for challenging environments.

### Specifications:

- Compliant to **EN 1935**
- 2 ball bearing butt hinges
- Available in Stainless Steel 201, 304 & 316 grades
- Square corners
- Can be used on doors of up to 120kg

### Finishes:

- Available in Satin Stainless Steel & Matt Black finishes



Product	Hinge Size	Dimensions		
		A	B	C
SS 201	4" x 3" x 3mm	102mm	76mm	3mm
	4" x 3.5" x 3mm	102mm	89mm	3mm
SS 304	4" x 3" x 3mm	102mm	76mm	3mm
	4" x 3.5" x 3mm	102mm	89mm	3mm
	4" x 4" x 3mm	102mm	102mm	3mm
	4.5" x 4" x 3mm	114mm	102mm	3mm
	4.5" x 4.5" x 3mm	114mm	114mm	3mm
	4.5" x 4.5" x 3.4mm	114mm	114mm	3.4mm
SS 316	4" x 3" x 3mm	102mm	76mm	3mm
	4" x 3.5" x 3mm	102mm	89mm	3mm
	4.5" x 4" x 3mm	114mm	102mm	3mm
	4.5" x 4.5" x 3mm	114mm	114mm	3mm
	4.5" x 4.5" x 3.4mm	114mm	114mm	3.4mm

Trusted every day

SKU	Description	UOM	Finish	Packaging
36-20-040303-2211-TS	2 Ball Bearing Butt Hinge, 4"x3"x3mm, PR, SSM, SS 304, Box, with SS 201 Timber door screws	PR	SSM	Box
36-20-040303-2211-MS	2 Ball Bearing Butt Hinge, 4"x3"x3mm, PR, SSM, SS 304, Box, with SS 201 machine screws	PR	SSM	Box
36-20-043503-2211-TS	2 Ball Bearing Butt Hinge, 4"x3.5"x3mm, PR, SSM, SS 304, Box, with SS 201 Timber door screws	PR	SSM	Box
36-20-043503-2211-MS	2 Ball Bearing Butt Hinge, 4"x3.5"x3mm, PR, SSM, SS 304, Box, with SS 201 machine screws	PR	SSM	Box
36-20-040403-2211-TS	2 Ball Bearing Butt Hinge, 4"x4"x3mm, PR, SSM, SS 304, Box, with SS 201 Timber door screws	PR	SSM	Box
36-20-040403-2211-MS	2 Ball Bearing Butt Hinge, 4"x4"x3mm, PR, SSM, SS 304, Box, with SS 201 machine screws	PR	SSM	Box
36-20-450403-2211-TS	2 Ball Bearing Butt Hinge, 4.5"x4"x3mm, PR, SSM, SS 304, Box, with SS 201 Timber door screws	PR	SSM	Box
36-20-450403-2211-MS	2 Ball Bearing Butt Hinge, 4.5"x4"x3mm, PR, SSM, SS 304, Box, with SS 201 machine screws	PR	SSM	Box
36-20-454503-2211-TS	2 Ball Bearing Butt Hinge, 4.5"x4.5"x3mm, PR, SSM, SS 304, Box, with SS 201 Timber door screws	PR	SSM	Box
36-20-454503-2211-MS	2 Ball Bearing Butt Hinge, 4.5"x4.5"x3mm, PR, SSM, SS 304, Box, with SS 201 machine screws	PR	SSM	Box
36-20-454534-2211-TS	2 Ball Bearing Butt Hinge, 4.5"x4.5"x3.4mm, PR, SSM, SS 304, Box, with SS 201 Timber door screws	PR	SSM	Box
36-20-454534-2211-MS	2 Ball Bearing Butt Hinge, 4.5"x4.5"x3.4mm, PR, SSM, SS 304, Box, with SS 201 machine screws	PR	SSM	Box
36-10-040303-2211-TS	2 Ball Bearing Butt Hinge, 4"x3"x3mm, PR, SSM, SS 201, Box, with SS 201 Timber door screws	PR	SSM	Box
36-10-040303-2211-MS	2 Ball Bearing Butt Hinge, 4"x3"x3mm, PR, SSM, SS 201, Box, with SS 201 machine screws	PR	SSM	Box
36-10-043503-2211-TS	2 Ball Bearing Butt Hinge, 4"x3.5"x3mm, PR, SSM, SS 201, Box, with SS 201 Timber door screws	PR	SSM	Box
36-10-043503-2211-MS	2 Ball Bearing Butt Hinge, 4"x3.5"x3mm, PR, SSM, SS 201, Box, with SS 201 machine screws	PR	SSM	Box
36-30-040303-2211-TS	2 Ball Bearing Butt Hinge, 4"x3"x3mm, PR, SSM, SS 316, Box, with SS 304 Timber door screws	PR	SSM	Box
36-30-040303-2211-MS	2 Ball Bearing Butt Hinge, 4"x3"x3mm, PR, SSM, SS 316, Box, with SS 304 machine screws	PR	SSM	Box
36-30-043503-2211-TS	2 Ball Bearing Butt Hinge, 4"x3.5"x3mm, PR, SSM, SS 316, Box, with SS 304 Timber door screws	PR	SSM	Box
36-30-043503-2211-MS	2 Ball Bearing Butt Hinge, 4"x3.5"x3mm, PR, SSM, SS 316, Box, with SS 304 machine screws	PR	SSM	Box
36-30-450403-2211-TS	2 Ball Bearing Butt Hinge, 4.5"x4"x3mm, PR, SSM, SS 316, Box, with SS 304 Timber door screws	PR	SSM	Box
36-30-450403-2211-MS	2 Ball Bearing Butt Hinge, 4.5"x4"x3mm, PR, SSM, SS 316, Box, with SS 304 machine screws	PR	SSM	Box
36-30-454503-2211-TS	2 Ball Bearing Butt Hinge, 4.5"x4.5"x3mm, PR, SSM, SS 316 Box, with SS 304 Timber door screws	PR	SSM	Box
36-30-454503-2211-MS	2 Ball Bearing Butt Hinge, 4.5"x4.5"x3mm, PR, SSM, SS 316 Box, with SS 304 machine screws	PR	SSM	Box
36-30-454534-2211-TS	2 Ball Bearing Butt Hinge, 4.5"x4.5"x3.4mm, PR, SSM, SS 316, Box, with SS 304 Timber door screws	PR	SSM	Box
36-30-454534-2211-MS	2 Ball Bearing Butt Hinge, 4.5"x4.5"x3.4mm, PR, SSM, SS 316, Box, with SS 304 machine screws	PR	SSM	Box



Scan to know more

[www.yale.ae](http://www.yale.ae)

