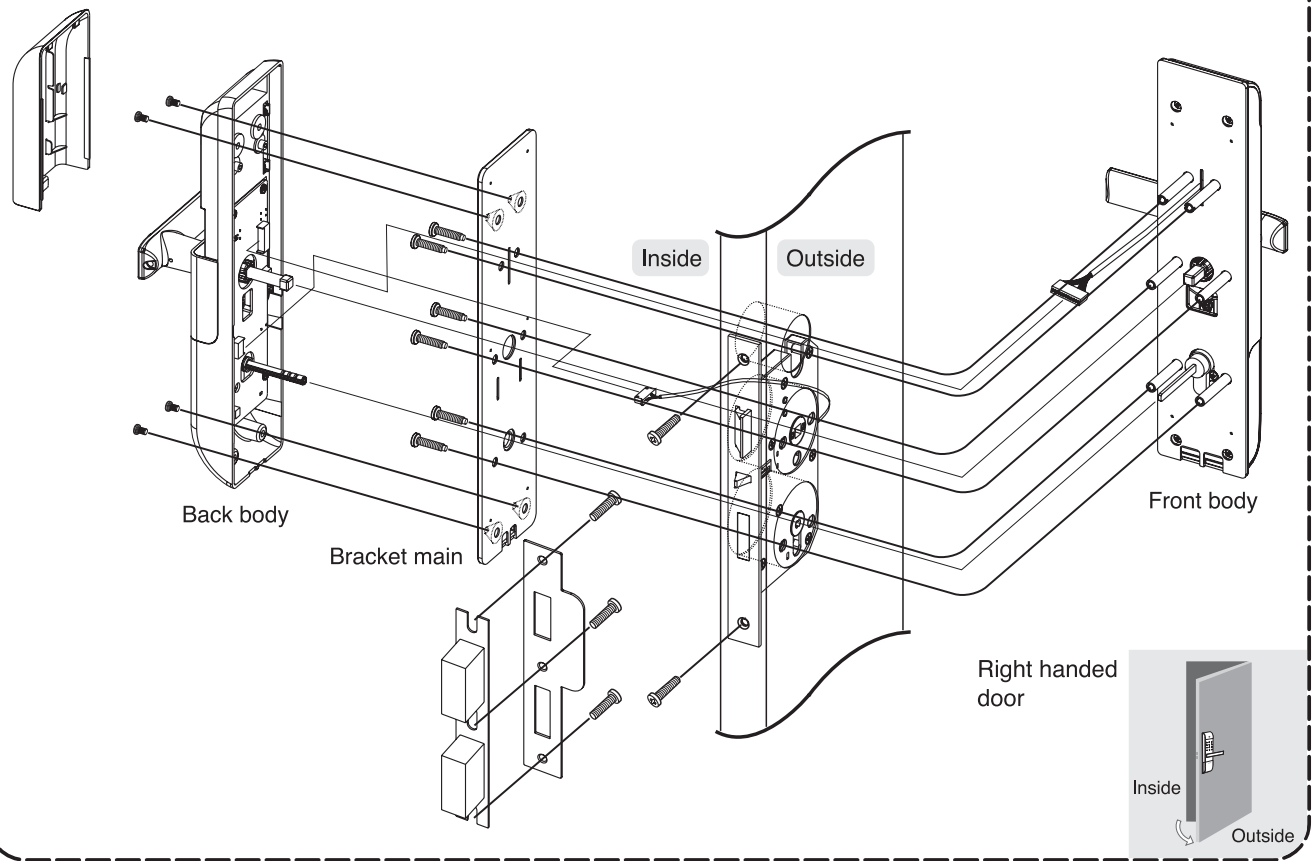


Installation view

※ Factory default : Right handed door

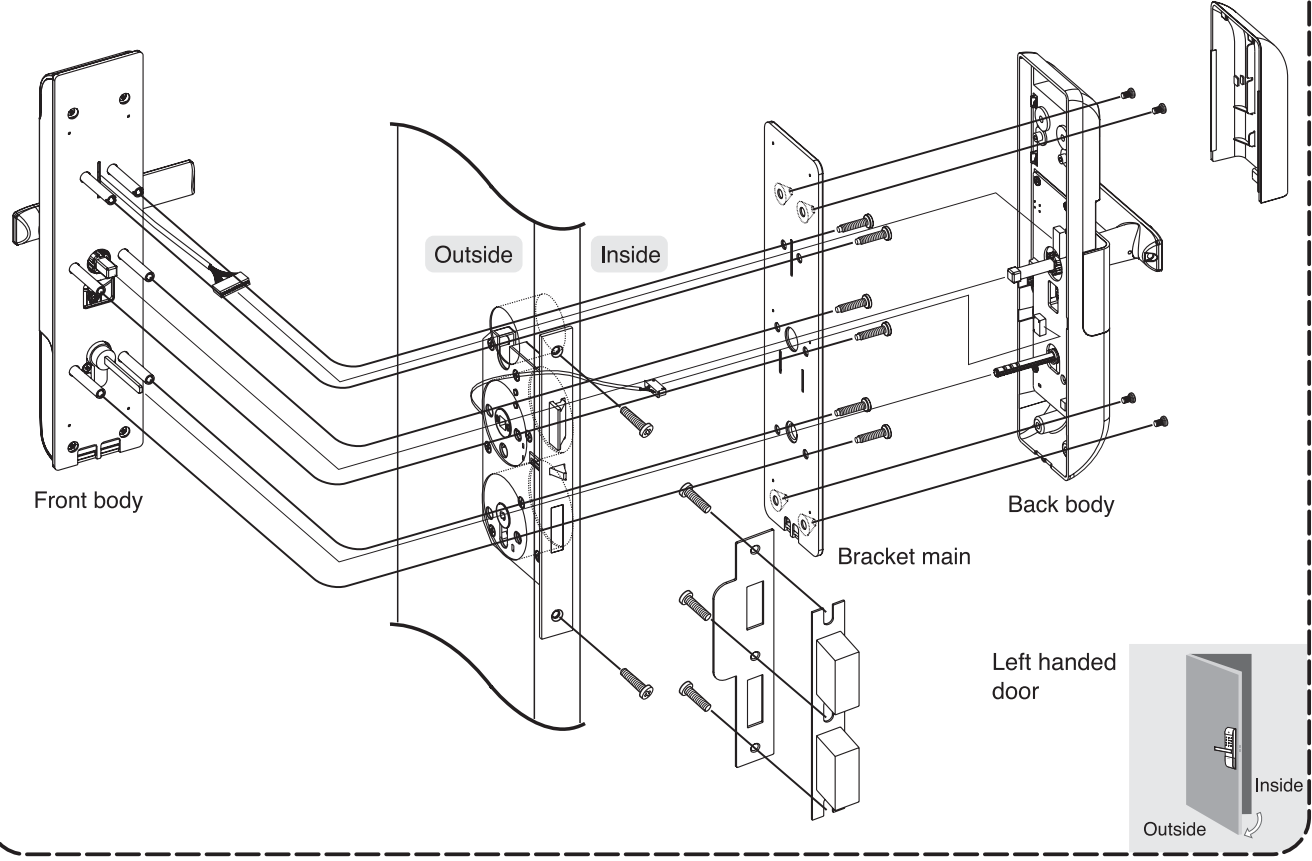
Right handed door



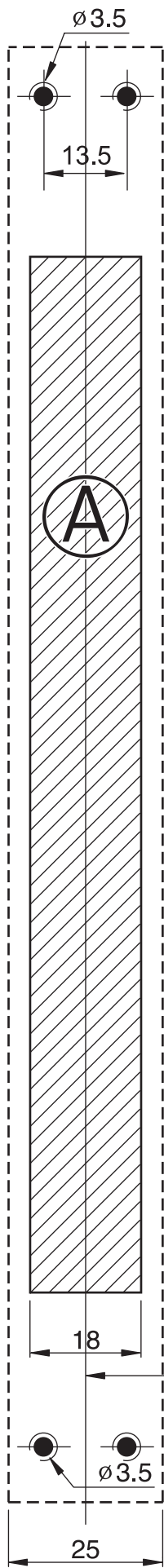
※ Make sure to check door side before you install. (See "2 Determine door type")

**how to set :** It automatically sets when putting batteries. The door should open position.

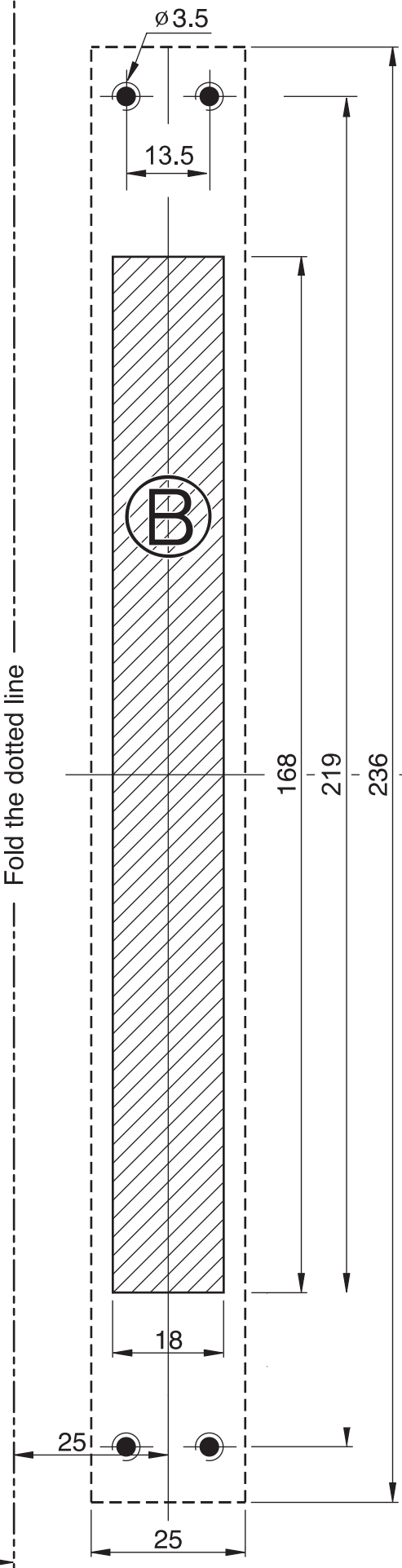
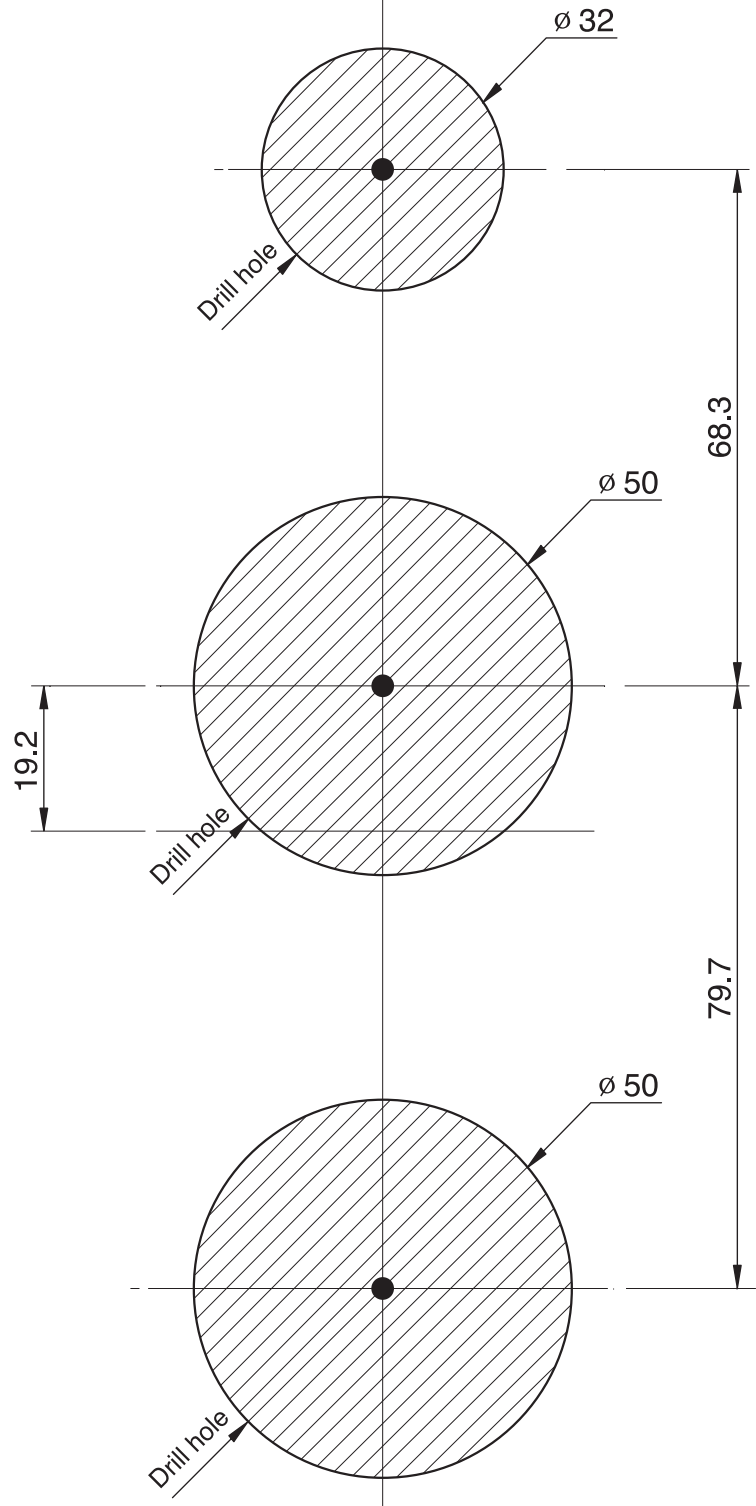
Left handed door



**Caution**  
Depending on your door, some modifications might be required.



**Caution**  
This template is based on 40mm thickness door.



**Caution**  
Ⓐ and Ⓑ shaded parts indicate the hole for mortise installation. If necessary, door modification is required accordingly.

※ Factory default is right handed door.

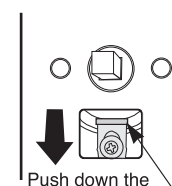
## ■ Instruction

- Fixing screw
- Connection

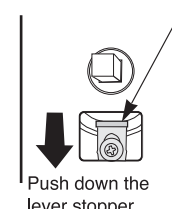
### How to change lever direction!

△ Make sure to grab the lever for safety reason when you change the direction.

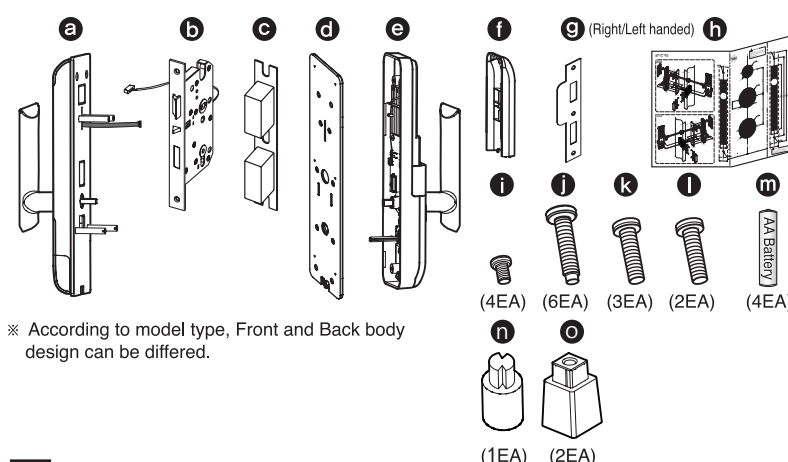
#### ① Front body



#### ② Back body



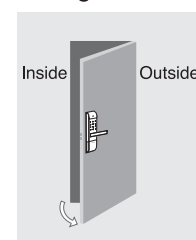
## 1 Package check



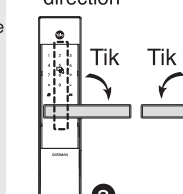
※ According to model type, Front and Back body design can be differed.

## 2 Determine door type

### ① Right handed door



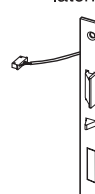
#### ■ Determine lever direction



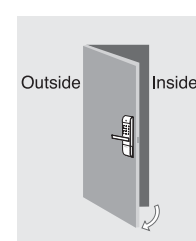
#### ■ Right handed type



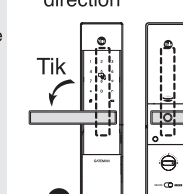
#### ■ Check mortise latch



### ② Left handed door



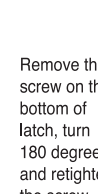
#### ■ Determine lever direction



#### ■ Left handed type



#### ■ Check mortise latch

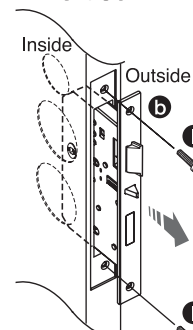
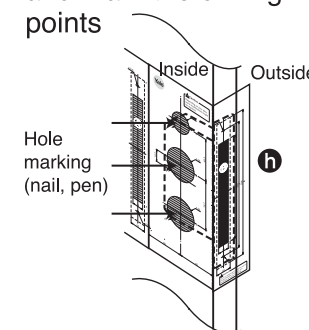
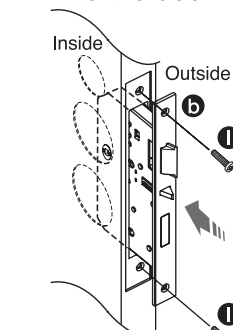


This product automatically detects the right and left side door. (field reversible)  
(how to set : It automatically sets when putting batteries. The door should open position.)

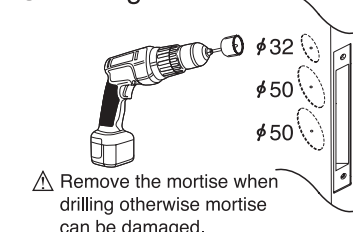
※ Lever direction adjustment : see left detail.

## 3 Hole cutting (Right handed door)

- ① Put mortise into the door
- ② Fold the template and mark the drilling points
- ③ Remove the mortise

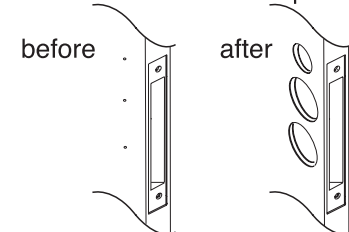


### ④ Drilling holes



△ Remove the mortise when drilling otherwise mortise can be damaged.

### ⑤ Check the hole size and positions

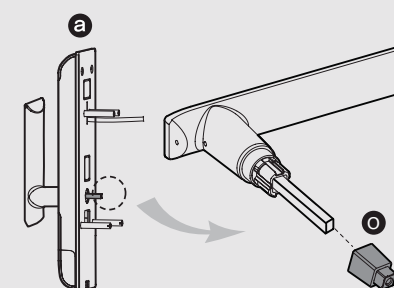


## How to adjust the door thickness

To install and use the product properly, proper use of Hub handle & hub shaft according to the door thickness should be used

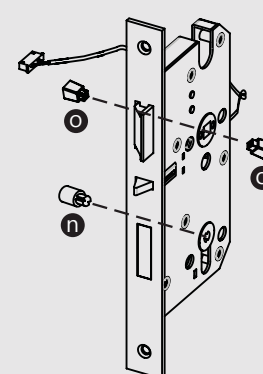
[ 70mm ~ 85mm ]

Add hub handle on the front handle.

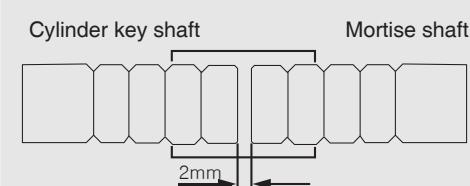


[85mm -over 90mm]

Please use 2 hub handle to a mortise and 1 hub shaft to a front handle should be used.



## Caution

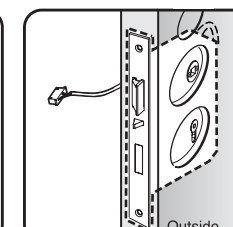
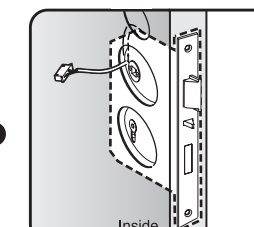
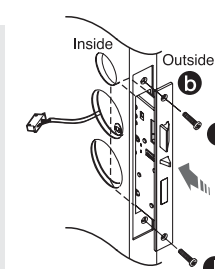
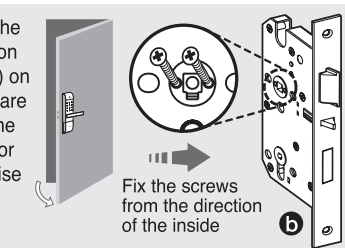


Cylinder key shaft & Mortise shaft on the specified place of the Mortise by a door thickness.  
Gap between Cylinder key shaft & Mortise shaft should be 2mm or longer  
Length of insertion between Cylinder key shaft & Mortise shaft should be 5mm or longer.  
In case to cut it shorter by mistake, operate after assemble on the specified place of the Mortise  
It may cause a problem to activate Mortise Ded bolt  
In case to cut it longer by mistake, operate after assemble on the specified place of the Mortise  
It may cause a problem on activation as the trailing end of Cylinder key shaft is against the trailing end of Mortise

## 4 Installation (Right handed door)

### ① Mortise installation

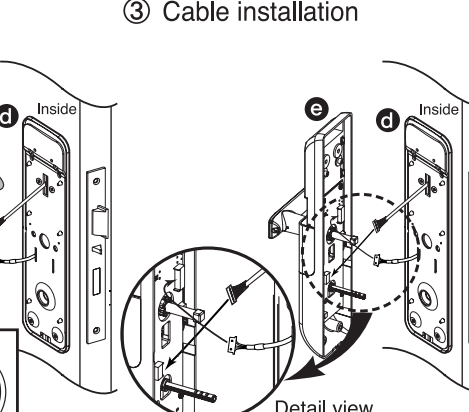
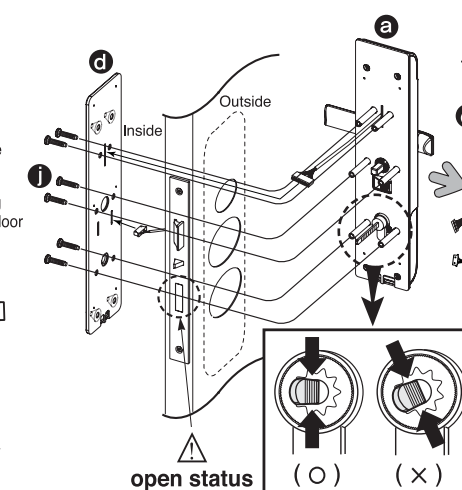
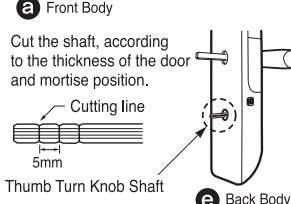
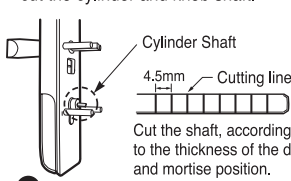
Make sure the panic function screws(2ea) on the mortise are fixed from the inside of door before mortise installation.



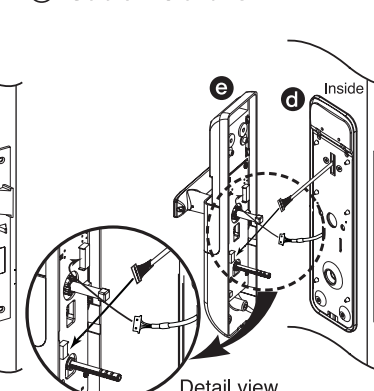
Pull out mortise wire to inside Outside

### ② Front body installation

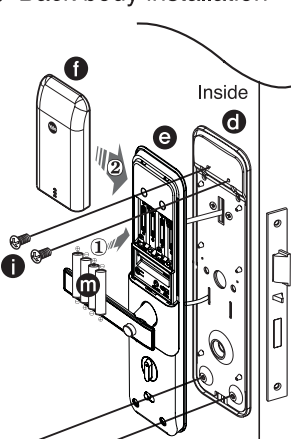
According to the door thickness, cut the cylinder and knob shaft.



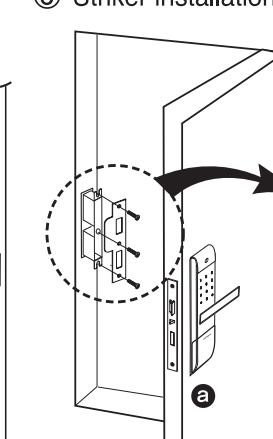
### ③ Cable installation



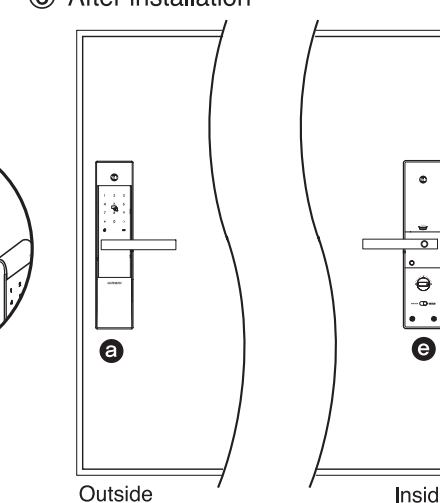
### ④ Back body installation



### ⑤ Striker installation



### ⑥ After installation



## Caution

Make sure the insert batteries when the door is open position  
(Make sure that automatic right and left side door detection sets when the door is open position.)

## Check points for Installer

1. The default Security Code is 1234567890  
Test the Security Code works by pressing \* 1234567890 \*
2. After key (Fingerprint, card, i-button) registration, check the lock open.
3. Check the Automatic Locking works properly.  
The door should be automatically locks in 5 seconds after closing.
4. Explain Safe handle and how to set.

## Check points for Owner

1. Re-register your own Security Code.
2. Read the User Manual before further use.
3. Register your own keys.
4. Understand the Emergency Power Supply feature.
5. Understand the Forced Lock Modes.

